

REV.  
C

SAE AS33514

FEDERAL SUPPLY CLASS  
4730

RATIONALE

ADDED EFFECTIVE DATE OF INACTIVE FOR NEW DESIGN UNDER NOTES.

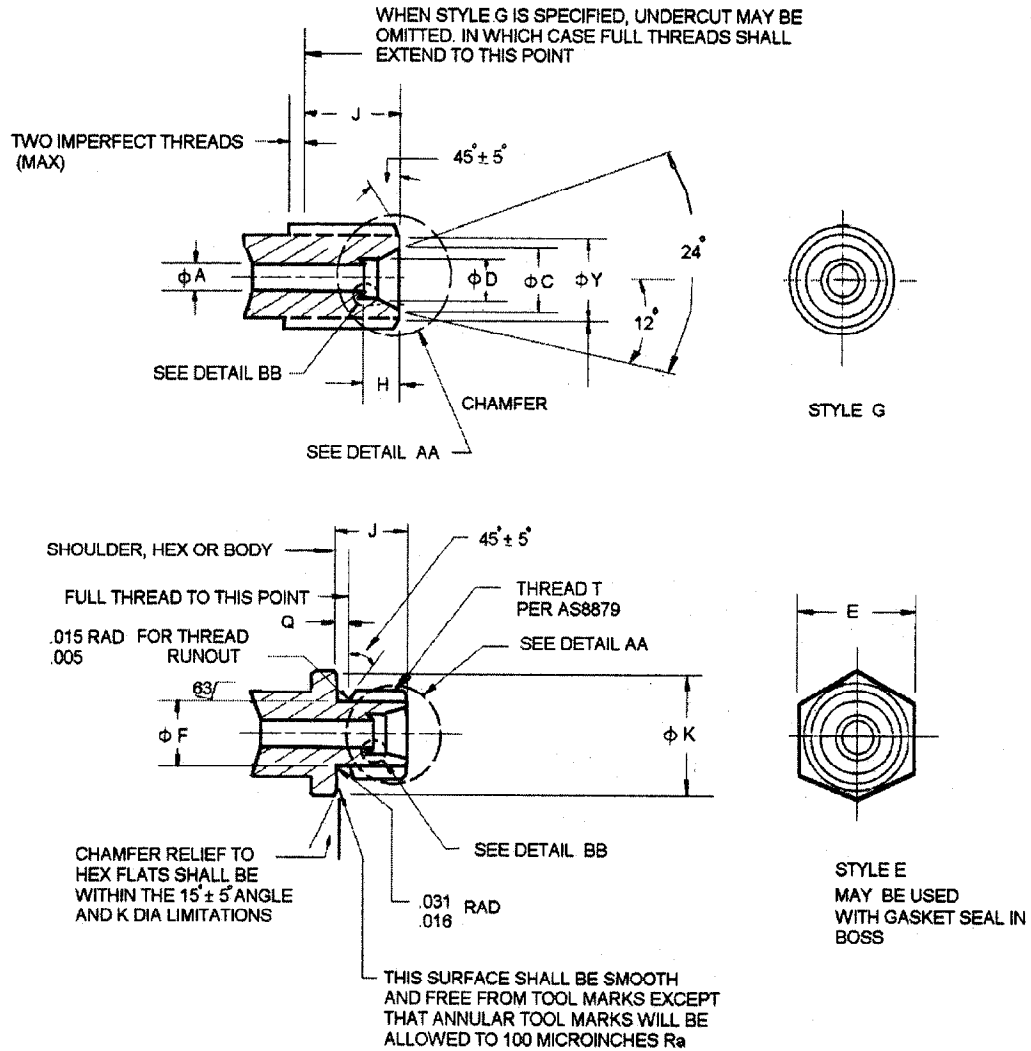
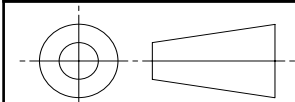


FIGURE 1 - STYLE E AND G

INACTIVE FOR NEW DESIGN /4/

THIRD ANGLE PROJECTION



CUSTODIAN: SAE G-3/G-3B

PROCUREMENT SPECIFICATION: NONE

**SAE Aerospace**  
An SAE International Group

**AEROSPACE STANDARD**

FITTING END, STANDARD DIMENSIONS FOR  
FLARELESS TUBE CONNECTION AND  
GASKET SEAL

**SAE AS33514**  
SHEET 1 OF 3

**REV. C**

SAE Technical Standards Board Rules provide that: "This report is published by SAE to advance the state of technical and engineering sciences. The use of this report is entirely voluntary, and its applicability and suitability for any particular use, including any patent infringement arising therefrom, is the sole responsibility of the user." SAE reviews each technical report at least every five years at which time it may be reaffirmed, revised, or cancelled. SAE invites your written comments and suggestions.

Copyright 2008 SAE International

All rights reserved. No part of this publication may be reproduced, stored in a retrieval system or transmitted, in any form or by any means, electronic, mechanical, photocopying, recording, or otherwise, without the prior written permission of SAE.

TO PLACE A DOCUMENT ORDER:

Tel: 877-606-7323 (inside USA and Car ada)

Tel: 724-776-4970 (outside USA)

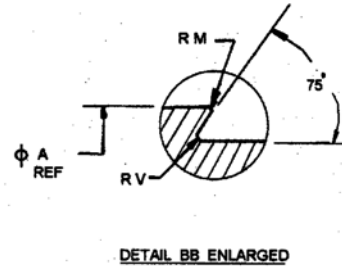
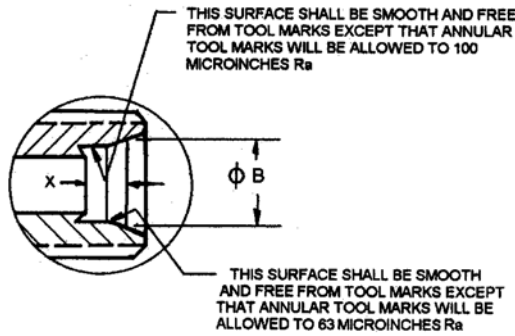
No reproduction or networking permitted without license from IHS

Fax: 724-776-0790

Not for Resale Email: CustomerService@sae.org

SAE WEB ADDRESS: <http://www.sae.org>

ISSUED 1998-08 REAFFIRMED 2007-01 REVISED 2008-07



**DETAIL AA ENLARGED**  
GAGING DIMENSIONS FOR CAVITIES

FIGURE 1 - DETAIL AA AND BB

TABLE 1 - DIMENSIONS DATA (A TO J)

SIZE NO.	TUBE OD	THREAD T AS8879	A ±.003	B GAGE	C REF.	D +.004 - .000	E		F +.002 - .003	H ±.003	J ±.010	
2	.125	.3125-24 UNJF-3A	.093	.163	.189	.135	.563	+ .003 - .004	.250	.188	.375	
3	.188	.3750-24 UNJF-3A	.125	.234	.267	.196	.625		.312	.234	.422	
4	.250	.4375-20 UNJF-3A	.187	.293	.319	.261	.688		.364	.250	.453	
5	.313	.5000-20 UNJF-3A	.234	.356	.382	.324	.750		.426			
6	.375	.5625-18 UNJF-3A	.297	.416	.441	.386	.813		.481	.250	.469	
8	.500	.7500-16 UNJF-3A	.422	.560	.601	.514	1.000		.660	.305	.562	
10	.625	.8750-14 UNJF-3A	.500	.686	.727	.641	1.125		.773	.350	.625	
12	.750	1.0625-12 UNJ-3A	.656	.810	.852	.766	1.375		.945	.415	.688	
16	1.000	1.3125-12 UNJ-3A	.875	1.062	1.102	1.016	1.625		±.016			1.195
20	1.250	1.6250-12 UNJ-3A	1.093	1.316	1.355	1.270	1.875		±.016			1.507
24	1.500	1.8750-12 UNJ-3A	1.344	1.565	1.604	1.520	2.125	±.020	1.756	.485		
32	2.000	2.5000-12 UNJ-3A	1.813	2.068	2.108	2.022	2.750		±.020		2.381	

TABLE 1 - DIMENSIONS DATA (K TO Y)

SIZE NO.	TUBE OD	K ±.010 DIA	M MAX RAD	Q +.015 - .000	V RAD		W MAX	X ±.005	Y ±.010																																								
					MAX	MIN																																											
2	.125	.549	.005	.063	.010	.005	.002	.128	.250																																								
3	.188	.611								.010	.010	.002	.158	.310																																			
4	.250	.674													.015	.010	.002	.174	.365																														
5	.313	.736																		.015	.010	.002	.190	.425																									
6	.375	.799																							.015	.010	.002	.193	.480																				
8	.500	.986																												.015	.010	.002	.210	.660															
10	.625	1.111																																	.015	.010	.002	.253	.775										
12	.750	1.361																																						.015	.010	.002	.253	.945					
16	1.000	1.599																																											.015	.010	.002	.322	1.195
20	1.250	1.849																																															
24	1.500	2.095	.015	.010	.002	.390	1.755																																										
32	2.000	2.720						.015	.010	.002	.395	2.380																																					

