

RATIONALE

AS4375C HAS BEEN REAFFIRMED TO COMPLY WITH THE SAE FIVE-YEAR REVIEW POLICY.

REV.  
C

SAE AS4375

SAE Technical Standards Board Rules provide that: "This report is published by SAE to advance the state of technical and engineering sciences. The use of this report is entirely voluntary, and its applicability and suitability for any particular use, including any patent infringement arising therefrom, is the sole responsibility of the user." SAE reviews each technical report at least every five years at which time it may be revised, reaffirmed, stabilized, or cancelled. SAE invites your written comments and suggestions.

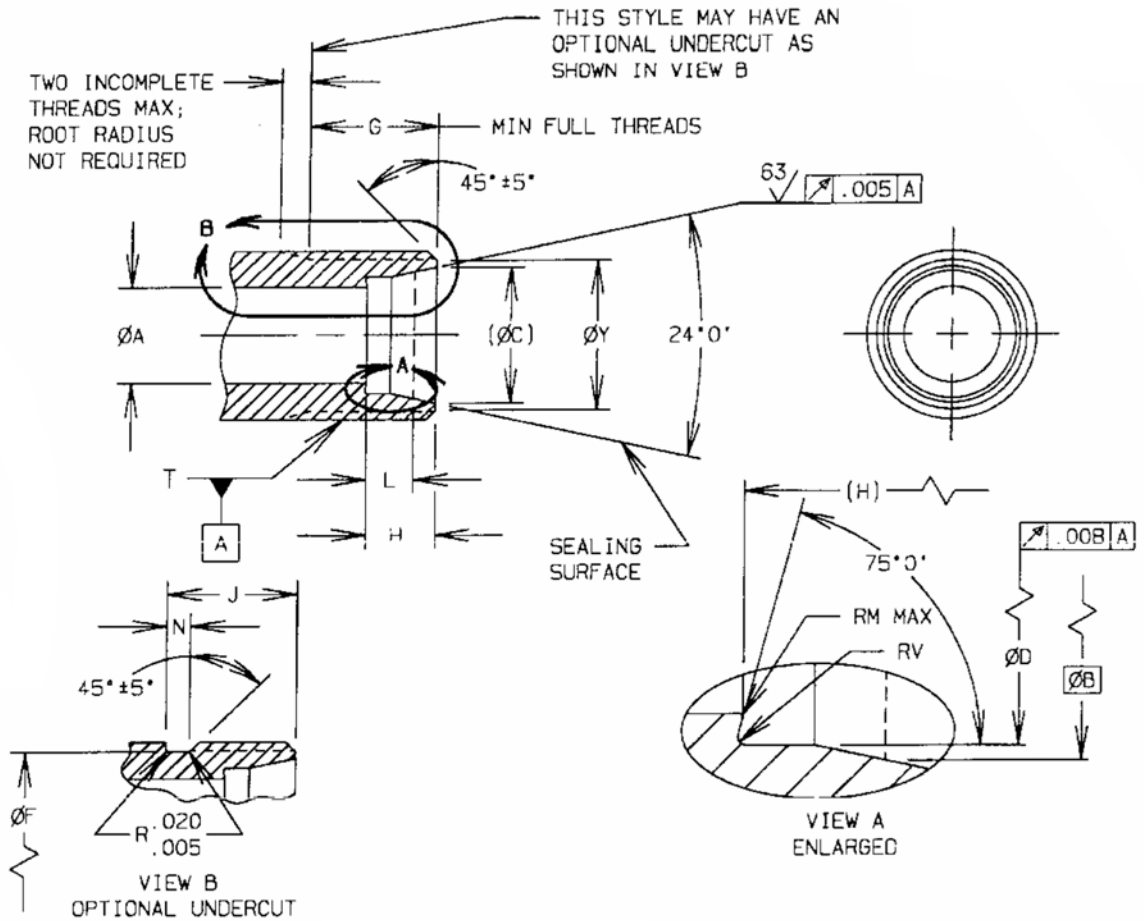
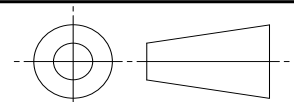


FIGURE 1 - FITTING END DESIGN, STYLE G

SAE values your input. To provide feedback on this Technical Report, please visit <http://www.sae.org/technical/standards/AS4375C>

THIRD ANGLE PROJECTION



CUSTODIAN: G-3/G-3B

PROCUREMENT SPECIFICATION: NONE /1/

**SAE Aerospace**  
An SAE International Group

**AEROSPACE STANDARD**

FITTING END, FLARELESS,  
DESIGN STANDARD

**SAE AS4375**  
SHEET 1 OF 3

REV.  
C

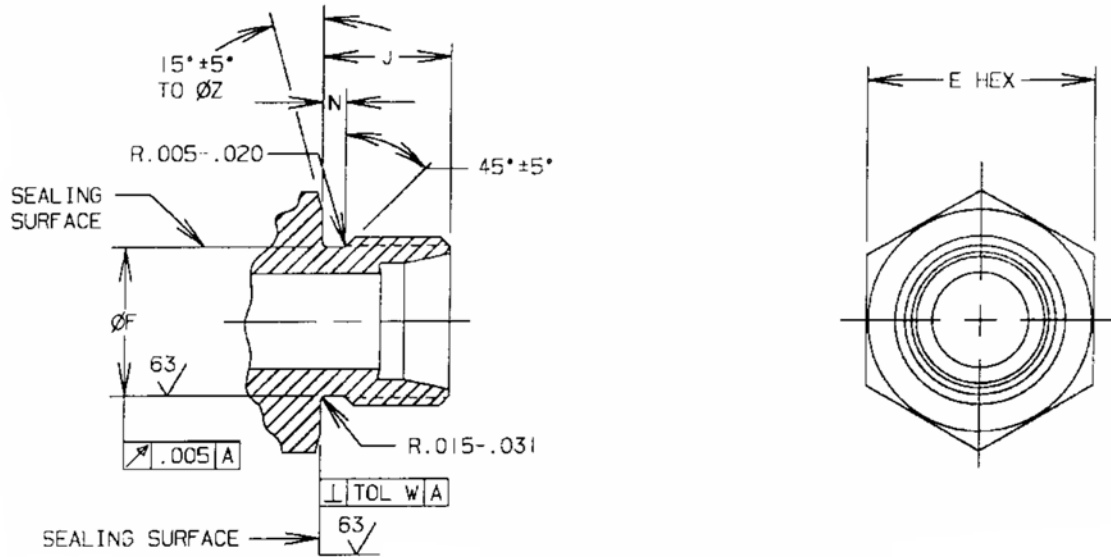


FIGURE 2 - FITTING END DESIGN, STYLE E  
SAME AS STYLE G EXCEPT AS SHOWN

TABLE 1A - DIMENSIONS A-F

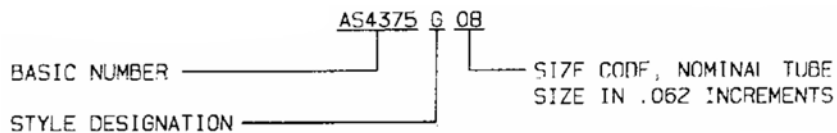
BASIC NO. AS4375 /8/ SIZE CODE	(NOMINAL TUBE SIZE)	T THREAD PER AS8879 CLASS 3A	DIMENSIONS					
			A ±.003	B	C	D +.004/-0.000	E	F +.002/-0.003
02	.125	.3125-24 UNJF	.093	.1630	.189	.135	.552 - .565	.250
03	.188	.3750-24 UNJF	.125	.2340	.267	.196	.615 - .628	.312
04	.250	.4375-20 UNJF	.187	.2930	.319	.261	.678 - .691	.364
05	.312	.5000-20 UNJF	.234	.3560	.382	.324	.740 - .753	.426
06	.375	.5625-18 UNJF	.297	.4160	.441	.386	.802 - .816	.481
08	.500	.7500-16 UNJF	.422	.5600	.601	.514	.990 - 1.003	.660
10	.625	.8750-14 UNJF	.500	.6860	.727	.641	1.113 - 1.128	.773
12	.750	1.0625-12 UNJ	.656	.8100	.852	.766	1.363 - 1.380	.945
14	.875	1.1875-12 UNJ	.765	.9360	.977	.891	1.488 - 1.505	1.070
16	1.000	1.3125-12 UNJ	.875	1.0620	1.102	1.016	1.613 - 1.630	1.195
20	1.250	1.6250-12 UNJ	1.093	1.3160	1.355	1.270	1.863 - 1.880	1.507
24	1.500	1.8750-12 UNJ	1.344	1.5650	1.604	1.520	2.109 - 2.135	1.756
32	2.000	2.5000-12 UNJ	1.813	2.0680	2.108	2.022	2.734 - 2.760	2.381

TABLE 1B - DIMENSIONS G-Z

BASIC NO. AS4375 /8/ SIZE CODE	G	H ±.003	J	L ±.005	M	N +.015/-.000	V	W MAX	Y	Z ±.010
02	.365	.188	.375	.128	.005	.063	.005 - .010	.002	.250	.542
03	.412	.234	.422	.158	.005	.063	.005 - .020	.002	.310	.605
04	.443	.234	.453	.174	.005	.075	.005 - .020	.002	.365	.668
05	.443	.250	.453	.190	.010	.075	.005 - .020	.002	.425	.730
06	.459	.250	.469	.193	.010	.083	.005 - .020	.002	.480	.792
08	.552	.305	.562	.210	.010	.094	.005 - .020	.002	.660	.980
10	.615	.350	.625	.255	.010	.107	.005 - .020	.002	.775	1.103
12	.678	.350	.688	.253	.010	.125	.005 - .020	.003	.945	1.353
14	.678	.356	.688	.260	.010	.125	.005 - .020	.003	1.070	1.478
16	.678	.415	.688	.322	.010	.125	.005 - .020	.003	1.195	1.603
20	.678	.415	.688	.325	.015	.125	.020 - .030	.003	1.505	1.853
24	.678	.485	.688	.390	.015	.125	.020 - .030	.003	1.755	2.099
32	.678	.485	.688	.395	.015	.125	.020 - .030	.003	2.380	2.724

NOTES:

- /1/ THIS FITTING END IS DESIGNED FOR USE WITH FITTINGS PER AS18280 AND AS4444.
2. INVENTORIED PARTS WITH FITTING ENDS CONFORMING TO THE PREVIOUS "LETTER CHANGE" OF THIS STANDARD MAY BE USED TO DEPLETION.
3. INTERPRETATION OF DRAWING PER ARP4296.
4. SURFACE TEXTURE: SYMBOLS PER ASME Y14.36M; REQUIREMENTS PER ASME B46.1. UNLESS OTHERWISE SPECIFIED, MACHINED SURFACES TO BE 125 µin Ra.
5. BREAK EDGES .003 TO .015 UNLESS OTHERWISE SPECIFIED.
6. DIMENSIONING AND TOLERANCING: ASME Y14.5M-1994.
7. DIMENSIONS IN INCHES. UNLESS OTHERWISE SPECIFIED, TOLERANCES: LINEAR DIMENSIONS ±.010, ANGULAR DIMENSIONS ±0°30'.
- /8/ EXAMPLE OF DRAWING CALLOUT:
  - a. TABULATED PART DRAWING: FITTING END PER AS4375, STYLE G
  - b. INDIVIDUAL PART DRAWING:



9. THE CHANGE BAR ( I ) LOCATED IN THE LEFT MARGIN IS FOR THE CONVENIENCE OF THE USER IN LOCATING AREAS WHERE TECHNICAL REVISIONS, NOT EDITORIAL CHANGES, HAVE BEEN MADE TO THE PREVIOUS ISSUE OF THIS DOCUMENT. AN (R) SYMBOL TO THE LEFT OF THE DOCUMENT TITLE INDICATES A COMPLETE REVISION OF THE DOCUMENT.