

REV. B

SAE AS4395

FEDERAL SUPPLY CLASS
4730

RATIONALE

AS4395B HAS BEEN REAFFIRMED TO COMPLY WITH THE SAE FIVE-YEAR REVIEW POLICY.

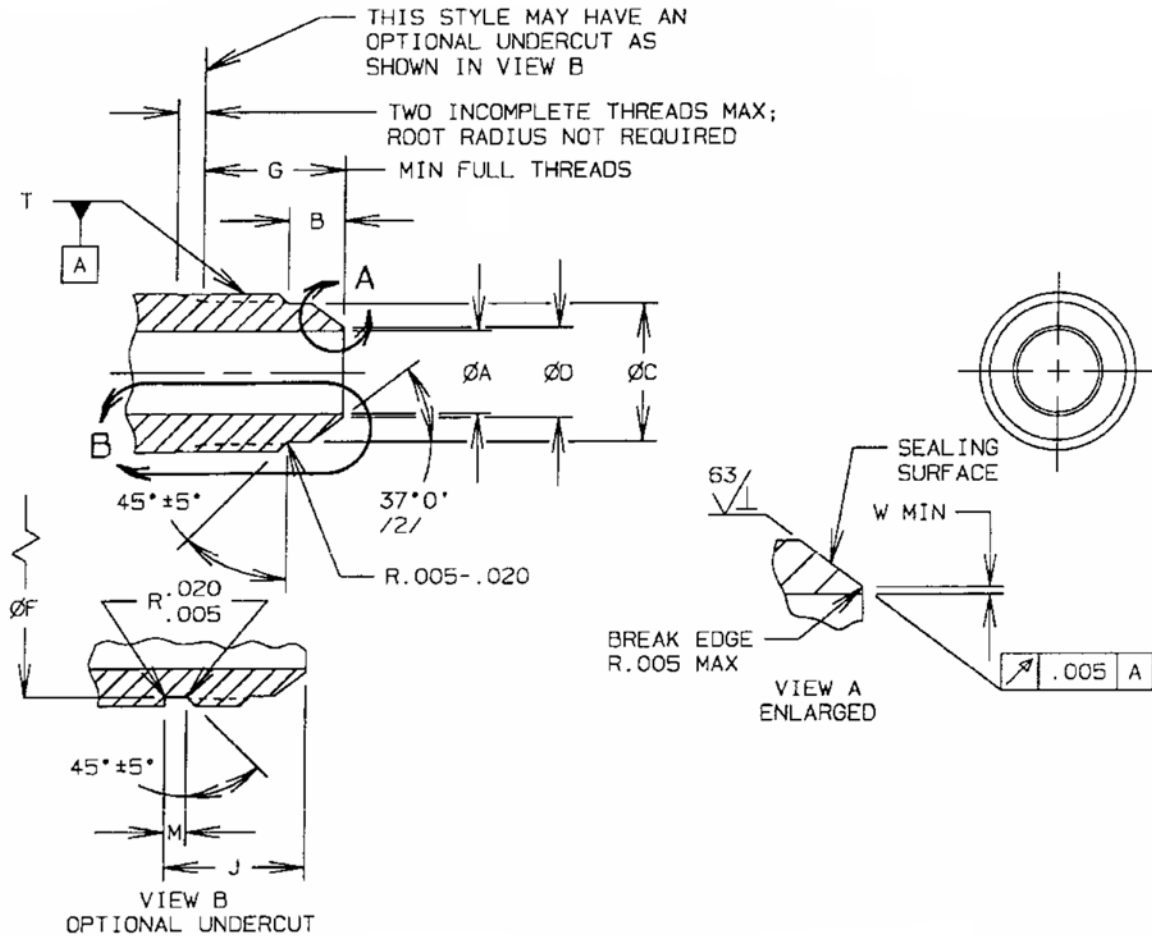
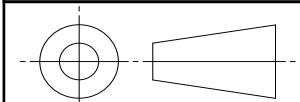


FIGURE 1 - FITTING END DESIGN, STYLE G

SAE values your input. To provide feedback on this Technical Report, please visit <http://www.sae.org/technical/standards/AS4395B>

THIRD ANGLE PROJECTION



CUSTODIAN: G-3/G-3B

PROCUREMENT SPECIFICATION: NONE /1/

SAE Aerospace
An SAE International Group

AEROSPACE STANDARD
FITTING END, FLARED,
TUBE CONNECTION, DESIGN STANDARD

SAE AS4395
SHEET 1 OF 3

REV. B

SAE Technical Standards Board Rules provide that: "This report is published by SAE to advance the state of technical and engineering sciences. The use of this report is entirely voluntary, and its applicability and suitability for any particular use, including any patent infringement arising therefrom, is the sole responsibility of the user." SAE reviews each technical report at least every five years at which time it may be revised, reaffirmed, stabilized, or cancelled. SAE invites your written comments and suggestions.

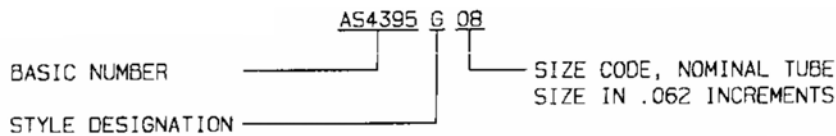
ISSUED 1991-10 REVISED 2003-01 REAFFIRMED 2013-01

TABLE 1B - DIMENSIONS F-W

BASIC NO. AS4395 /9/ SIZE CODE	F +.002/-.003	G	H	J	L ±.010	M +.015/-.000	W
02	.250	.433	.005	.448	.542	.063	.005
03	.312	.464	.005	.479	.605	.063	.005
04	.364	.535	.005	.550	.668	.075	.005
05	.426	.535	.005	.550	.730	.075	.005
06	.481	.541	.005	.556	.792	.083	.005
08	.660	.642	.005	.657	.980	.094	.012
10	.773	.743	.005	.758	1.103	.107	.022
12	.945	.849	.008	.864	1.353	.125	.022
16	1.195	.896	.008	.911	1.603	.125	.029
20	1.507	.943	.008	.958	1.853	.125	.029
24	1.756	1.068	.008	1.083	2.099	.125	.029
28	2.131	1.193	.008	1.208	2.474	.125	.044
32	2.381	1.318	.008	1.333	2.724	.125	.044
40	2.881	1.094	.008	1.109	3.224	.125	.044
48	3.381	1.172	.008	1.187	3.724	.125	.044

NOTES:

- /1/ THIS FITTING END IS DESIGNED FOR USE WITH FITTINGS PER AS4841.
- /2/ THE CONICAL SEALING SURFACE SHALL BE FREE OF FLAWS, NICKS, AND CHATTER MARKS WHEN VIEWED WITH THE UNAIDED EYE.
- 3. INTERPRETATION OF DRAWING PER ARP4296.
- 4. INVENTORIED PARTS WITH FITTING ENDS CONFORMING TO THE PREVIOUS "LETTER CHANGE" OF THIS STANDARD MAY BE USED TO DEPLETION.
- 5. SURFACE TEXTURE: SYMBOLS PER ASME Y14.36M; REQUIREMENTS PER ASME B46.1. UNLESS OTHERWISE SPECIFIED, MACHINED SURFACES TO BE 125 µin Ra.
- 6. BREAK EDGES .003 TO .015 UNLESS OTHERWISE SPECIFIED.
- 7. DIMENSIONING AND TOLERANCING: ASME Y14.5M-1994.
- 8. DIMENSIONS IN INCHES. UNLESS OTHERWISE SPECIFIED, TOLERANCES: LINEAR DIMENSIONS ±.015, ANGULAR DIMENSIONS ±0°30'.
- /9/ EXAMPLE OF DRAWING CALLOUT:
 - a. TABULATED DRAWING: FITTING END PER AS4395, STYLE G
 - b. INDIVIDUAL DRAWING:



- 10. THE CHANGE BAR (I) LOCATED IN THE LEFT MARGIN IS FOR THE CONVENIENCE OF THE USER IN LOCATING AREAS WHERE TECHNICAL REVISIONS, NOT EDITORIAL CHANGES, HAVE BEEN MADE TO THE PREVIOUS ISSUE OF THIS DOCUMENT. AN (R) SYMBOL TO THE LEFT OF THE DOCUMENT TITLE INDICATES A COMPLETE REVISION OF THE DOCUMENT.