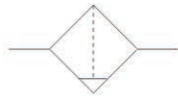


订购码/Ordering Code

<b>BF</b>	<b>2000</b>	<b>D</b>
型号/Model AF: 小型 BF: 中型 Model AF: Small Size BF: Middle Size	接管口径 Joint Pipe Code 1500: G1/8" 2000: G1/4" 3000: G3/8" 4000: G1/2"	排水方式 空白: 差压排水 D: 自动排水 Drian Type Blank: Differential Drain D: Automatic Drain



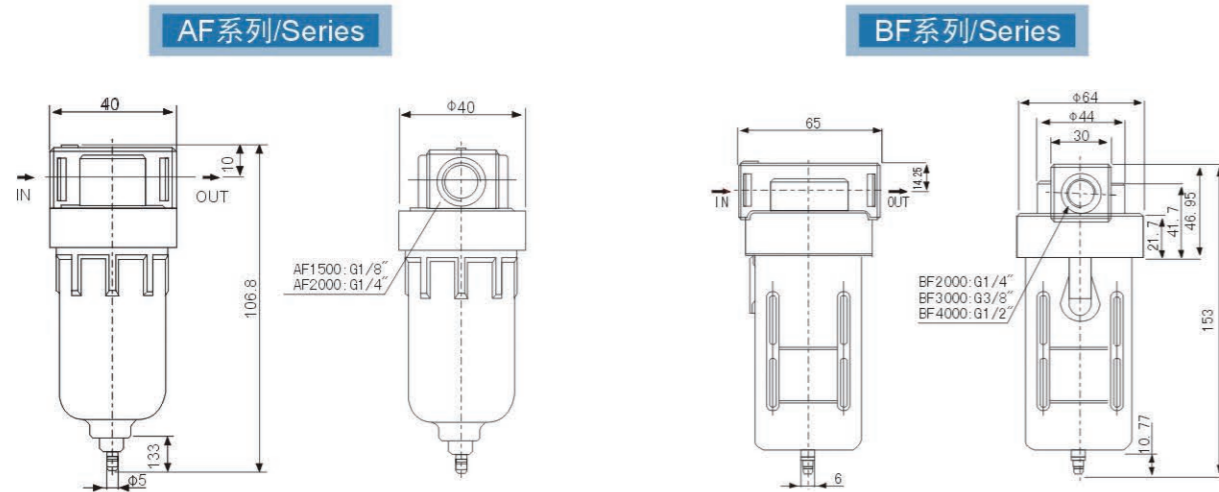
图形符号/Graphic Symbol



规格/Specifcation

型号 / Model	AF1500	AF2000	BF2000	BF3000	BF4000
使用流体/Operating Fluid	空气 / Air				
接管口径/Port Size	G1/8"	G1/4"	G1/4"	G3/8"	G1/2"
滤芯精度/Filtering Element Roughness	40um				
保证耐压力/Ensured Pressure Resistance	1.5MPa				
使用温度范围/Operating Temperature Range	5~60℃				
滤水杯容量/Capacity of Filter Cup	15 cc		60 cc		
重量/Weight	0.11 KG		0.35KG		
材质 Material	本体/Body 铝合金压铸成型 / Aluminum Die-casting Forming				
	容杯/Container Cup PE				
	保护杯罩/Protective Cup Cover 铁 / Steel				

外形尺寸/Overall Dimension

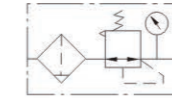


订购码/Ordering Code

<b>BFR</b>	<b>2000</b>	<b>D</b>
型号/Model AFR: 小型 BFR: 中型 Model AFR: Small Size BFR: Middle Size	接管口径 Joint Pipe Code 1500: G1/8" 2000: G1/4" 3000: G3/8" 4000: G1/2"	排水方式 空白: 差压排水 D: 自动排水 Drian Type Blank: Differential Drain D: Automatic Drain



图形符号/Graphic Symbol



规格/Specifcation

型号 / Model	AFR1500	AFR2000	BFR2000	BFR3000	BFR4000
使用流体/Operating Fluid	空气 / Air				
接管口径/Port Size	G1/8"	G1/4"	G1/4"	G3/8"	G1/2"
调节压力范围/Range of Adlutable Pressure	0.05~0.85MPa				
最大可调压力/Max Adlutable Pressure	0.95MPa				
保证耐压力/Ensured Pressure Resistance	1.5MPa				
使用温度范围/Operating Temperature Range	5~60℃				
给油杯容量/Capacity of Oil Feed Cup	15 cc		60 cc		
重量/Weight	0.26 KG		0.4KG		
材质 Material	本体/Body 铝合金压铸成型 / Aluminum Die-casting Forming				
	容杯/Container Cup PE				
	保护杯罩/Protective Cup Cover 铁 / Steel				

外形尺寸/Overall Dimension

