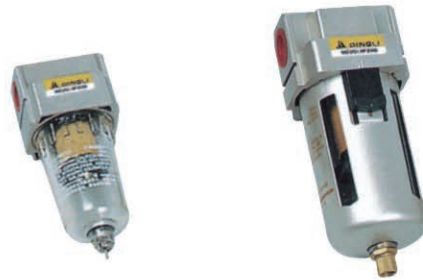
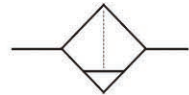


订购码/Ordering Code

DA	F	3000	04	
系列 / Series	功能代号 / 过滤器 / Function Code	规格代号 / Specification Code	接管口径 / Joint Pipe Bore	排水方式 / Drain Type
DA系列 / DA Series	Filter	1000 3000 2000 4000 2500 5000	M5:M5×0.8 01:G1/8" 02:G1/4" 03:G3/8" 04:G1/2" 06:G3/4" 10:G1"	空白: 差压排水 / D: 自动排水 Blank: Differential Drain / D: Automatic Drain



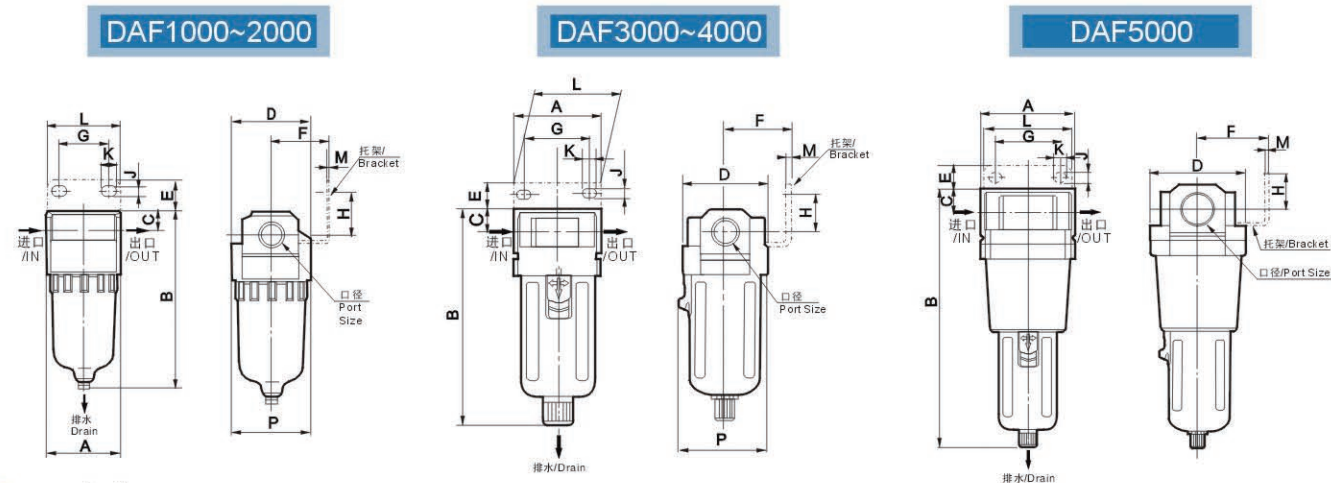
图形符号/Graphic Symbol



规格/Specification

型号/Model	DAC1000 -M5	DAC2000 -01	DAC2000 -02	DAC3000 -02	DAC3000 -03	DAC4000 -03	DAC4000 -04	DAC4000 -06	DAC5000 -06	DAC5000 -10
额定流量/Rated Flow	110	750	750	1500	1500	4000	4000	6000	7000	7000
接管口径/Joint Pipe Bore	M5	G1/8"	G1/4"	G1/4"	G3/8"	G3/8"	G1/2"	G3/4"	G3/4"	G1"
过滤精度/Filter Precision	25 μ									
最高工作压力/Highest Working Pressure	1.0MPa									
保证耐压力/Ensured Pressure Resistance	1.5MPa									
使用温度范围/Operating Temperature Range	5~60℃									
容器材料/Container Material	聚碳酸酯/Polycarbonate									
防护罩/Protective Cover	无/Not Available					有/Available				
排水器功能/Drain Function	差压放水/Differential Drain					差压放水、自动放水/Differential Drain, Automatic Drain				

外形尺寸/Overall Dimension



尺寸表/Dimension Sheet

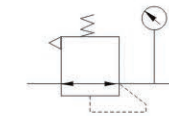
型号/Model	口径/Port Size (G)	A	B	C	D	E	F	G	H	J	K	L	M	P
DAF1000	M5	25	66	7	25	-	-	-	-	-	-	-	-	26.5
DAF2000	G1/8" ~G1/4"	40	97.5	11	40	17	30	27	22	5.4	8.4	40	2.3	40
DAF3000	G1/4" ~G3/8"	53	132.5	14	53	16	41	40	23	6.5	8	53	2.3	56
DAF4000	G3/8" ~1/2"	70	168.5	18	70	17	50	54	26	8.5	10.5	70	2.3	73
DAF4000-06	G3~4"	75	172.5	20	70	14	50	54	25	8.5	10.5	70	2.3	73
DAF5000	G3/4" ~G1"	90	247.5	24	90	23	66.5	66	35	11	13	90	3.2	90

订购码/Ordering Code

DA	R	3000	04	
系列 / Series	功能代号 / 减压阀 / Function Code	规格代号 / Specification Code	接管口径 / Joint Pipe Bore	排水方式 / Drain Type
DA系列 / DA Series	Regulator	1000 3000 2000 4000 2500 5000	M5:M5×0.8 01:G1/8" 02:G1/4" 03:G3/8" 04:G1/2" 06:G3/4" 10:G1"	Blank: Differential Drain / D: Automatic Drain



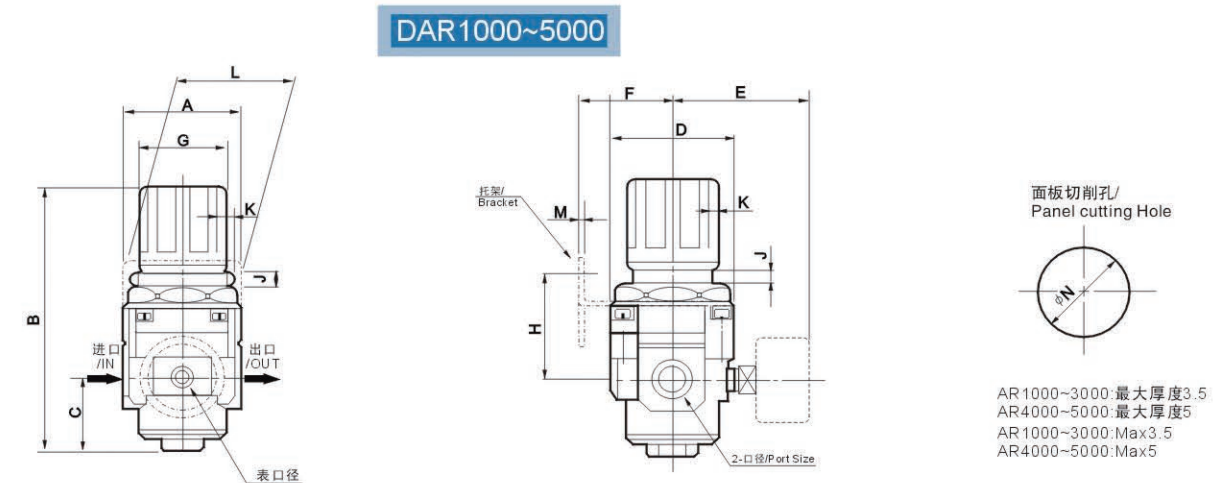
图形符号/Graphic Symbol



规格/Specification

型号/Model	DAR1000 -M5	DAR2000 -01	DAR2000 -02	DAR3000 -02	DAR3000 -03	DAR4000 -03	DAR4000 -04	DAR4000 -06	DAR5000 -06	DAR5000 -10
额定流量/Rated Flow	100	550	550	2500	2500	6000	6000	6000	8000	8000
接管口径/Joint Pipe Bore	M5	G1/8"	G1/4"	G1/4"	G3/8"	G3/8"	G1/2"	G3/4"	G3/4"	G1"
最高工作压力/Highest Working Pressure	1.0MPa									
保证耐压力/Ensured Pressure Resistance	1.5MPa									
使用温度范围/Operating Temperature Range	5~60℃									
调压范围/Range of Adjustable Pressure	0.05~0.85MPa									
阀门类型/Valve Type	带溢流型/With Overflow									

外形尺寸/Overall Dimension



尺寸表/Dimension Sheet

型号/Model	口径/Port Size (G)	A	B	C	D	E	F	G	H	J	K	L	M	N
DAR1000	M5	25	61.5	11	25	26	25	28	30	4.5	6.5	40	2	20.5
DAR2000	G1/8" ~G1/4"	40	95	17	40	56.8	30	34	44	5.4	15.4	55	2.3	33.5
DAR3000	G1/4" ~G3/8"	53	127.5	35	53	60.8	39	40	46	6.5	8	53	2.3	42.5
DAR4000	G3/8" ~1/2"	70	149.5	37.5	70	65.5	49.5	54	54	8.5	10.5	70	2.3	52.5
DAR4000-06	G3~4"	75	154	40.5	70	69.5	49.5	54	55.5	8.5	10.5	70	2.3	52.5
DAR5000	G3/4" ~G1"	90	168	48	90	75.5	49.5	54	62	8.5	10.5	70	2.3	52.5