

工業4.0

Industrial

Linear guidance system

直線模組系統

高線速度：

滾輪在導軌面的滾動，可以達到很高的線速度，最高可達8m/s。

低安裝基準的精度要求：

導向滾輪導軌系統中的滾輪，就相當於滾珠導軌的滑塊，滾輪和導軌面的接觸屬於線接觸；

這樣就大大降低了對安裝基準面的精度要求，裝配省時省力。

低維護更換成本：

導向滾輪導軌系統，可以單獨更換磨損了的導軌或滾輪，不需要全部更換；

在現場，通過對偏心滾輪的調整，可方便調整並得到需要的預緊力。

因此，滾輪導軌的維護更換成本更低。

使用壽命更長：

導軌具有比滾輪軸承長得多的壽命，很多情況下，只需要更換滾輪，

然後通過調整偏心滾輪的偏心距，來得到需要的預緊力。滾珠導軌，

不管是滾珠還是導軌磨損到一定程度之後，為了保證應用需要的預緊或間隙，

都需要整套換掉。

適合惡劣環境下的使用：

滾輪中的軸承的滾動體，和導軌並不直接接觸，同時軸承具有很好的密封性；

因為滾輪和導軌的接觸方式為線接觸，使得滾輪通過“刮擦”運動，可以把灰

塵、切屑等雜質從導軌面上刮除，保持導軌面的清潔，從而非常適合在惡劣環境下使用。

High linear speed :

The system reach maximum linear speed 8m/s while rollers running on the rail.

Low install precision requirement :

The rollers and guideway are belong to linear contact, therefore it greatly reduced the need of the surface precision to increase the installation efficiency.

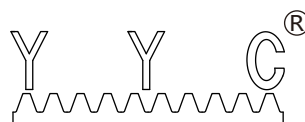
Low maintenance costs and longer lifetime :

Racks are much more durable than rollers, In most cases, rollers are the only components has to be change. Rollers can be replace individually. Tensioning could be adjust through eccentric rollers in the locale.

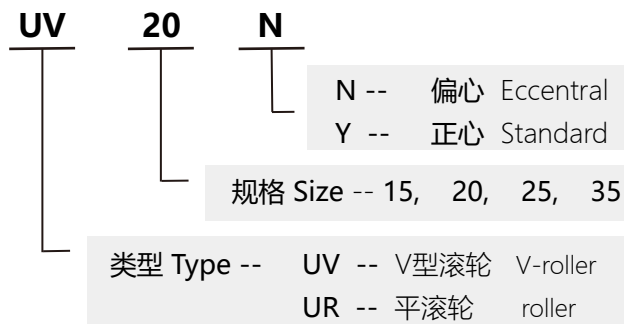
Useable under severe environment :

The bearing structure in the rollers has great sealing property and its not direct contact with racks. Rollers will scratch off the dust due to the linear contact with racks to keep rack surface clean. Therefore, the linear systems are suitable under severe environment.

傳動知名品牌

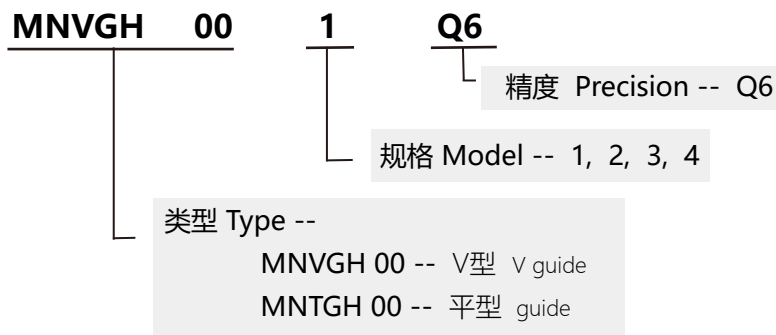


滚轮 型号说明



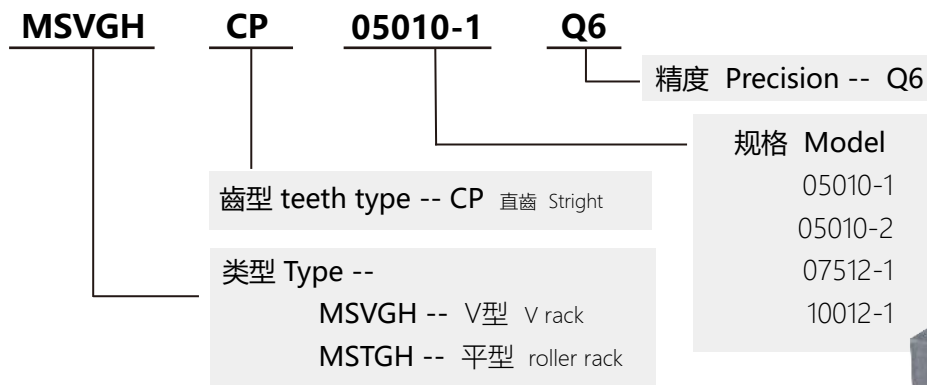
P.4

轨道 型号说明



P.10

带齿轨道 型号说明



P.10

润滑罩 型号说明



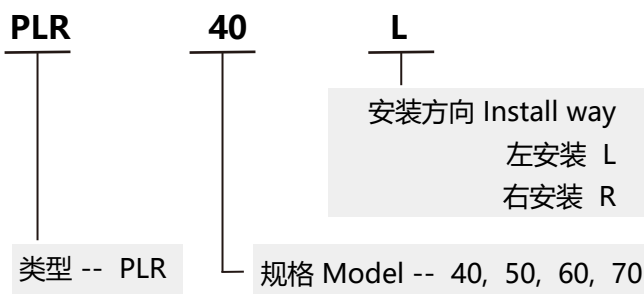
P.9

安裝發蘭 型號說明



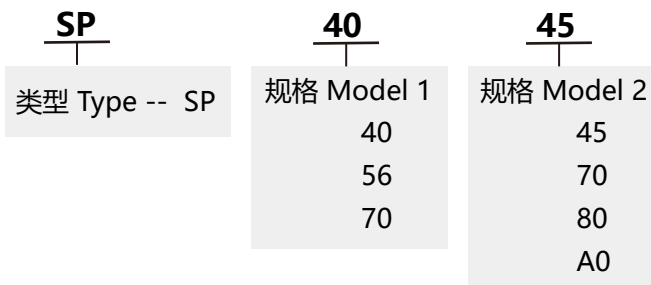
P.8

滾輪模組 型號說明



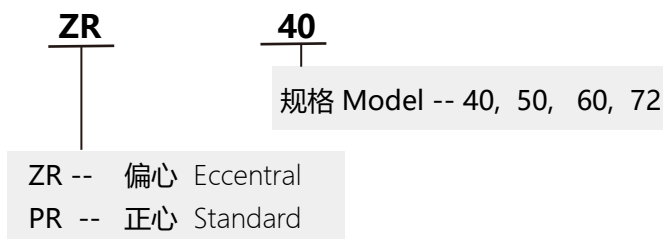
P.14

扁型軌道 型號說明

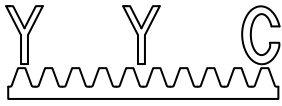


P.20

重載滾輪 型號說明



P.21



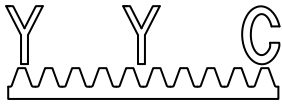
V型滾輪

特點：高速度

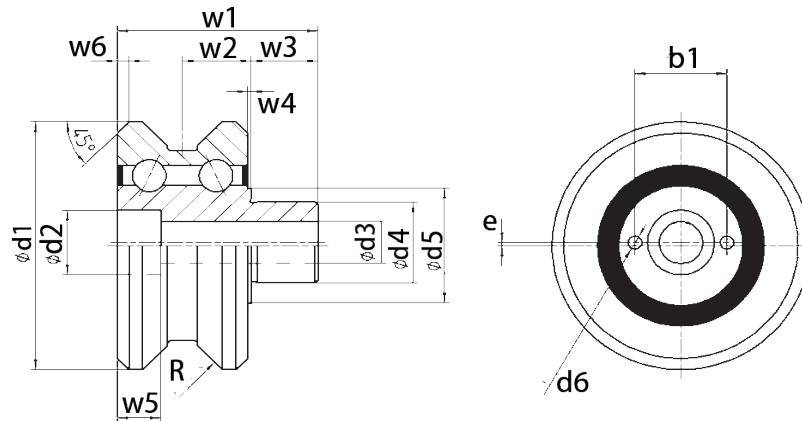
維護簡單

使用壽命長

型號 Model	偏心距 eccentricity (mm)	材質 Materials	負荷能力 Load (N)			重量 weight (Kg)	最大轉速 Max. Speed (RPM)
			C0	C1	C2		
UV15N	0	100Cr6	6150	6500	1530	0.25	9000
UV15Y	1		6150	6500	1530	0.25	
UV20N	0		8650	9000	2070	0.5	
UV20Y	1		8650	9000	2070	0.5	
UV25N	0		13550	14700	3230	1.1	
UV25Y	1		13550	14700	3230	1.1	
UV35N	0		28850	25100	5530	2.8	
UV35Y	1		28850	25100	5530	2.8	

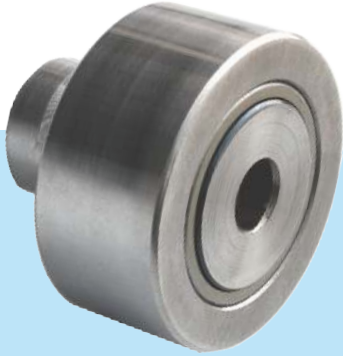
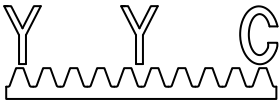


V型滾輪 | V-roller



Unit = mm

	UV15N / UV15Y	UV20N / UV20Y	UV25N / UV25Y	UV35N / UV35Y
φd1	53	63	77	107
φd2	13.5	16.5	20.5	28.5
φd3	8.4	10.5	13	17
φd4h7	15	20	25	40
φd5	23.8	27.7	35.6	56.9
φd6	2.6x3	2.6x3	4.1x4.5	4.1x4.5
w1	35	46	60	84
w2	12	16	20.5	30
w3	12	15	20	25
w4	1	1	1	1
w5	9	11	13	17.5
w6	2	3	3.5	7.5
b1	18.5	22.5	27.5	42
e	0 (1)	0 (1)	0 (1)	0 (1)
R	R250	R300	R360	R500



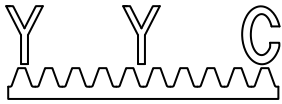
平型滾輪

特點：高速度

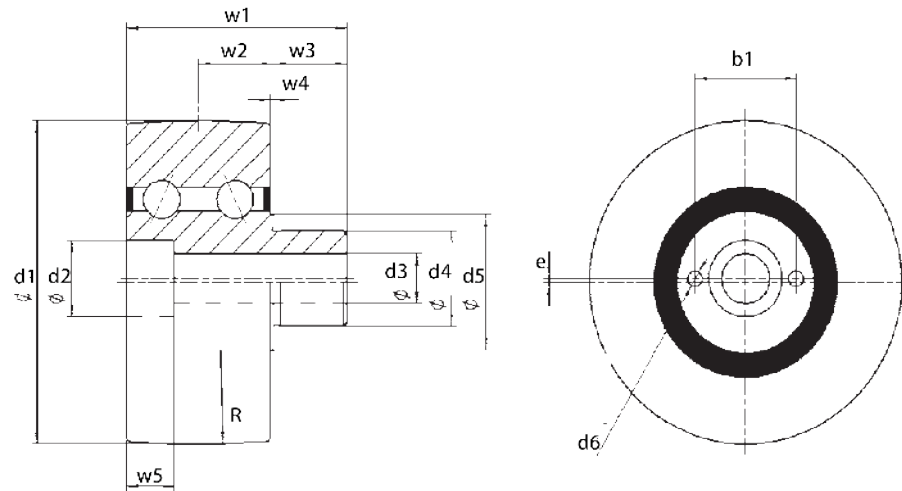
維護簡單

使用壽命長

型號 Model	偏心距 eccentricity (mm)	材質 Materials	負荷能力 Load (N)			重量 weight (Kg)	最大轉速 Max. Speed (RPM)
			C0	C1	C2		
UR15Y	1	100Cr6	6100	6500	1550	0.18	9000
UR20Y	1		8600	9000	2000	0.7	
UR25Y	1		13500	14700	3200	1.1	
UR35Y	1		28800	25600	5500	3	

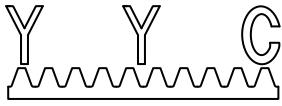


平型滾輪 | Roller

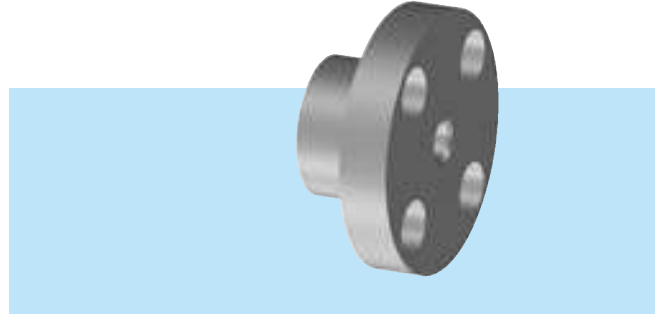
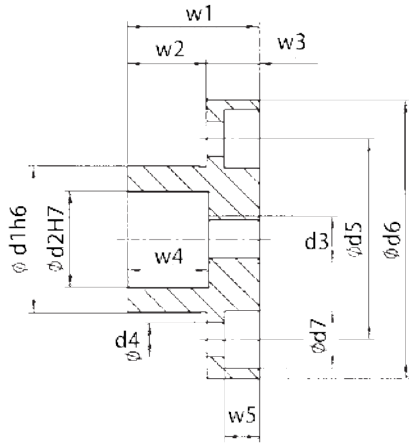


Unit = mm

	UR15Y	UR20Y	UR25Y	UR35Y
$\phi d1$	47	72	85	100
$\phi d2$	13.5	16.5	20.5	28.5
$\phi d3$	8.4	10.5	13	17
$\phi d4h7$	15	20	25	40
$\phi d5$	23.8	27.7	35.6	56.9
$\phi d6$	2.6x3	2.6x3	4.1x4.5	4.1x4.5
w1	35	46	60	84
w2	12	16	20.5	30
w3	12	15	20	25
w4	1	1	1	1
w5	9	11	13	17.5
b1	18.5	22.5	27.5	42
e	0 (1)	0 (1)	0 (1)	0 (1)
R	R500	R500	R500	R500

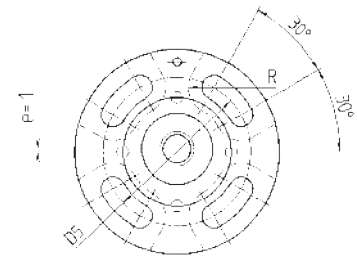
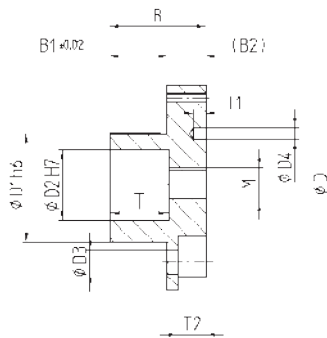
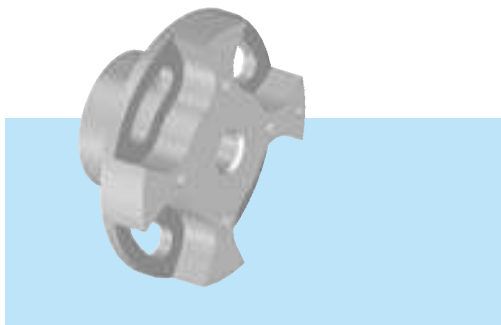


滾輪法蘭 | Roller Flange



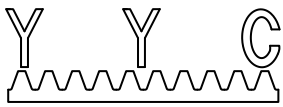
Unit = mm

型號 Model	w1	w2	w3	w4	w5	d1h6	d2H7	d3	d4	d5	d6	d7
FZ 15	14.5	24	9.5	12.5	5.7	26	15	M8	5.8	36	49	10
FZ 20	18	29	11	16	6.8	30	20	M10	7	42	58	11
FZ 25	20.5	34	13.5	21	9	38	25	M12	9	52	72	15
FZ 35	22	39	17	26	11	59	40	M16	11	75	98	18

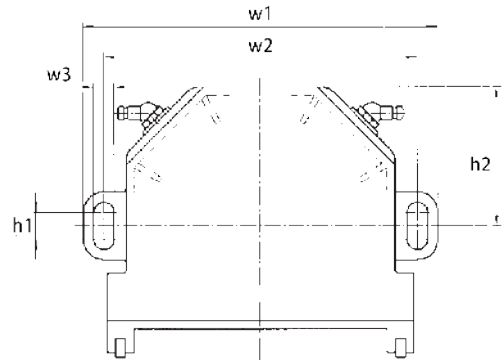
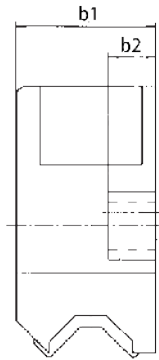


Unit = mm

型號 Model	B	B1	B2	D	D1h6	D2H7	D3	D4	D5	M	T	T1	T2	R
FE 15	24	14.5	9.5	49	26	15	5.3	2.6	36	M6	12.5	3	6.3	6.5
FE 20	29	18	11	58	30	20	6.4	2.6	42	8	16	3	7.9	7.5
FE 25	34		13.5	72	38	25	8.4	4.1	52	12	21	4.5	9.9	9
FE 35	39	22	17	98	59	40	10.5	4.1	75	16	26	4.5	12.3	12

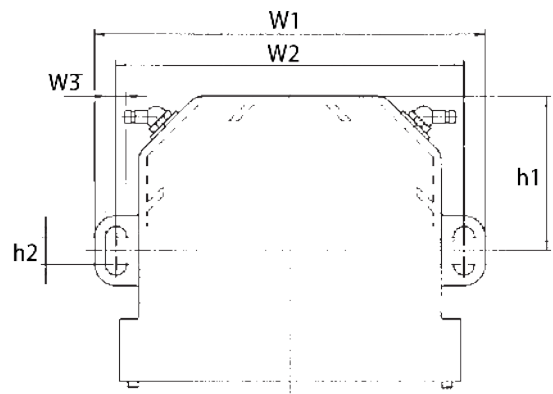
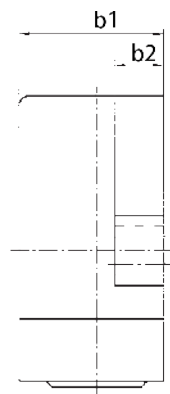


滾輪潤滑單元 | Roller Lub.



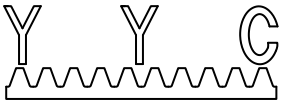
Unit = mm

型號 Model	b1	b2	w1	w2	w3	h1	h2
LV 15	26.5	12	81	71	4.5	31	7.5
LV 20	34.5	12	96	84	5.5	35.5	7.5
LV 25	44	15	112	99	6.5	43	8.5
LV 35	63.5	15	128	128	6.5	58	8.5

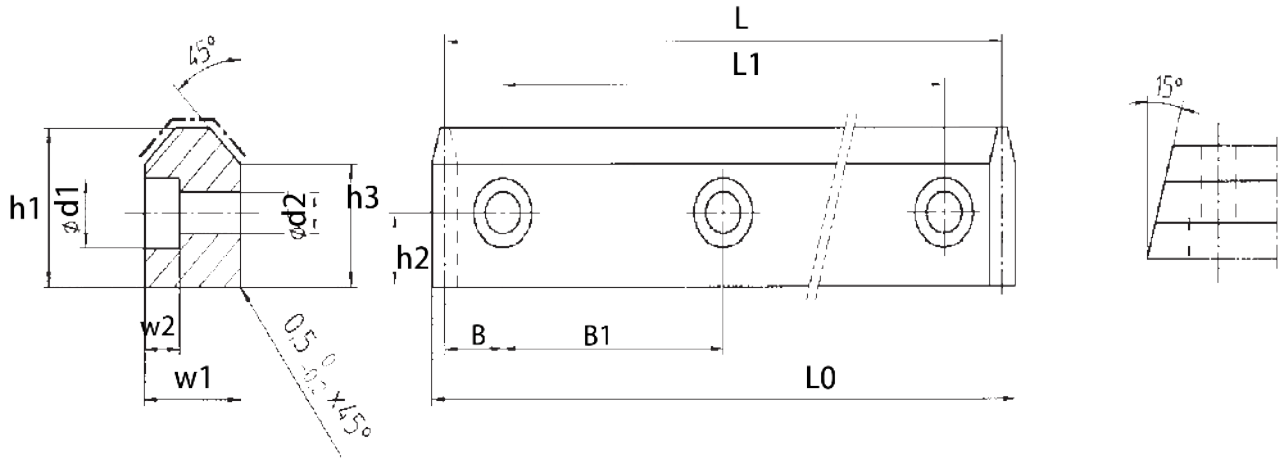
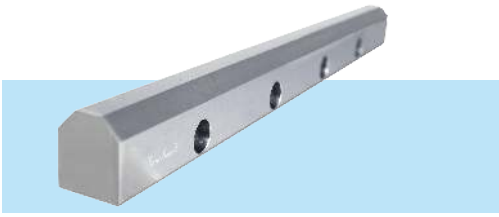


Unit = mm

型號 Model	b1	b2	w1	w2	w3	h1	h2
LR 15	26.5	12	75	65	4.5	27.5	7.5
LR 20	34.5	12	102	91	5.5	40	7.5
LR 25	44	15	120	107	6.5	47	8.5
LR 35	63.5	15	135	122	6.5	54.5	8.5

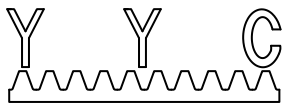


V型導軌 | V-Guide

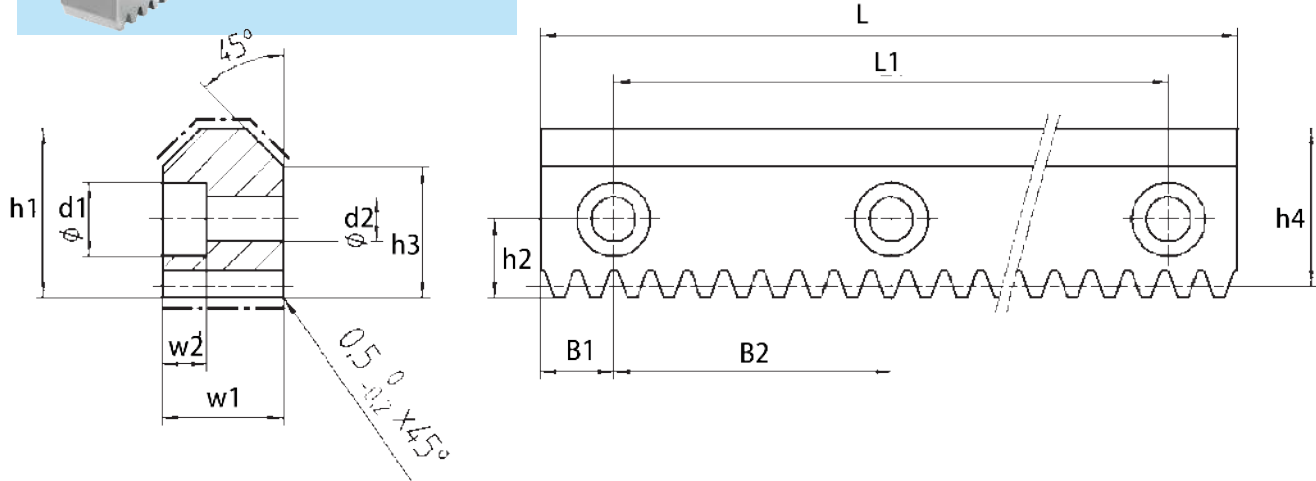
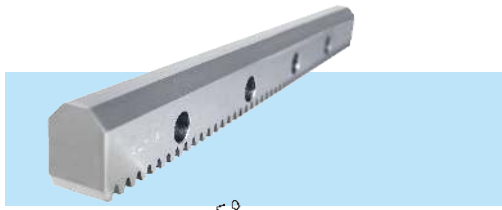


Unit = mm

型號 Model	B	B1	d1	d2	h1	h2	h3	L	L1	L0	w1	w2
MNVGH 00-1-Q6	15	100	11	7	24.5	11.5	20	1030	1000	1033.9	14.5	6.8
	15	100	11	7	24.5	11.5	20	630	600	633.89	14.5	6.8
MNVGH 00-2-Q6	15	100	15	9	29.5	14	23.5	1030	1000	1035.2	19.5	9
	15	100	15	9	29.5	14	23.5	630	600	635.23	19.5	9
MNVGH 00-3-Q6	15	100	15	9	33	14.5	25.2	1230	1200	1236.6	24.7	9
	15	100	15	9	33	14.5	25.2	630	600	636.62	24.7	9
MNVGH 00-4-Q6	15	100	18	11	46.6	18	36.7	1230	1200	1239.3	34.6	11
	15	100	18	11	46.6	18	36.7	630	600	639.27	34.6	11

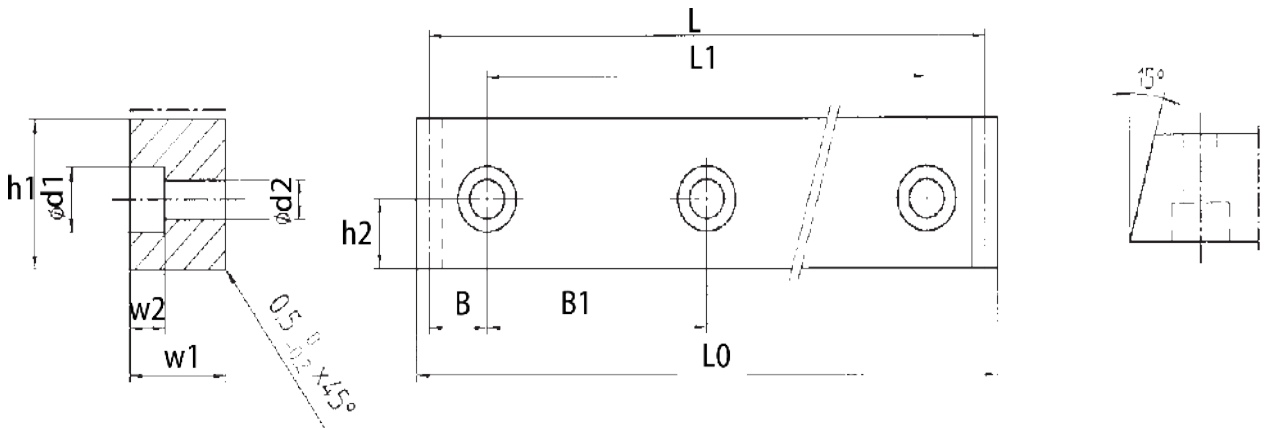
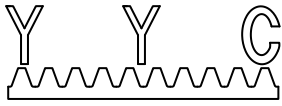


V型齒條 | V-Rack



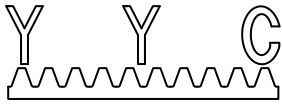
Unit = mm

型號 Model	B1	B2	d1	d2	h1	h2	h3	h4	L	L1	w1	w2	模數 Module	齒距 Pitch
MSVGH-CP-050101-Q6	15	100	11	7	24.5	11.5	20	22.91	1030	1000	14.5	6.8	1.5915	5
	15	100	11	7	24.5	11.5	20	22.91	630	600	14.5	6.8		5
MSVGH-CP-050102-Q6	15	100	15	9	29.5	14	23.5	27.91	1030	1000	19.5	9	1.5915	5
	15	100	15	9	29.5	14	23.5	27.91	630	600	19.5	9		5
MSVGH-CP-07512-Q6	15	100	15	9	33	14.5	25.2	30.61	1230	1200	24.7	9	2.3873	7.5
	15	100	15	9	33	14.5	25.2	30.61	630	600	24.7	9		7.5
MSVGH-CP-10012-Q6	15	100	18	11	46.6	18	36.7	43.42	1230	1200	34.6	11	3.1831	10
	15	100	18	11	46.6	18	36.7	43.42	630	600	34.6	11		10

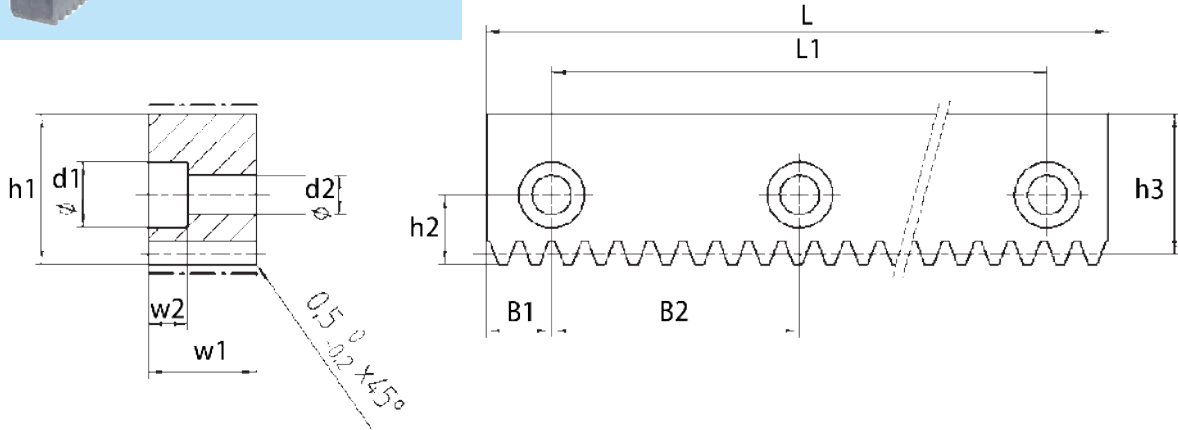
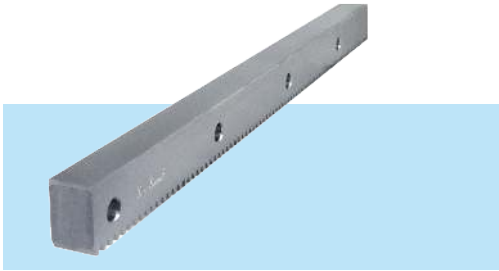


Unit = mm

型號 Model	B	B1	d1	d2	h1	h2	L	L1	L0	w1	w2
MNTGH 00-1-Q6	15	100	11	7	24.5	11.5	1030	1000	1033.9	14.5	6.8
	15	100	11	7	24.5	11.5	630	600	633.89	14.5	6.8
MNTGH 00-2-Q6	15	100	15	9	29.5	14	1030	1000	1035.2	19.5	9
	15	100	15	9	29.5	14	630	600	635.23	19.5	9
MNTGH 00-3-Q6	15	100	15	9	33	14.5	1230	1200	1236.6	24.7	9
	15	100	15	9	33	14.5	630	600	636.62	24.7	9
MNTGH 00-4-Q6	15	100	18	11	46.6	18	1230	1200	1239.3	34.6	11
	15	100	18	11	46.6	18	630	600	639.27	34.6	11



平軌齒條 | Roller rack



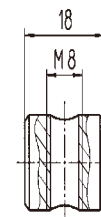
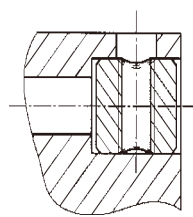
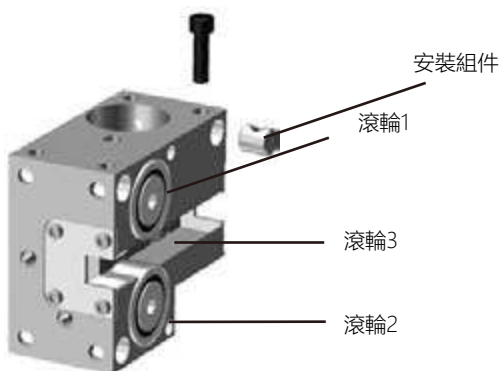
Unit = mm

型號 Model	B1	B2	d1	d2	h1	h2	h3	L	L1	w1	w2	模數 Module	齒距 Pitch
MSTGH-CP-050101-Q6	15	100	11	7	24.5	11.5	22.91	1030	1000	14.5	6.8	1.5915	5
	15	100	11	7	24.5	11.5	22.91	630	600	14.5	6.8		5
MSTGH-CP-050102-Q6	15	100	15	9	29.5	14	27.91	1030	1000	19.5	9	1.5915	5
	15	100	15	9	29.5	14	27.91	630	600	19.5	9		5
MSTGH-CP-07512-Q6	15	100	15	9	33	14.5	30.61	1230	1200	24.7	9	2.3873	7.5
	15	100	15	9	33	14.5	30.61	630	600	24.7	9		7.5
MSTGH-CP-10012-Q6	15	100	18	11	46.6	18	43.42	1230	1200	34.6	11	3.1831	10
	15	100	18	11	46.6	18	43.42	630	600	34.6	11		10

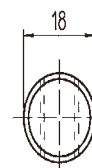
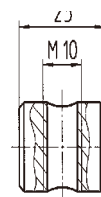
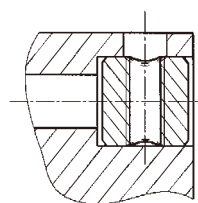
40 & 52 系列

型號 Model		滾輪 Roller			材質 Materials	負荷能力 Load (N)			重量 weight (Kg)
		1	2	3		C0	C1	C2	
PLR40	L1	ZR	PR	PR	AlZnMG3CU	14000	7100	1900	2.5
	L2	ZR	PR	ZR					
	L3	PR	ZR	PR					
	R1	ZR	PR	PR					
	R2	ZR	PR	ZR					
	R3	PR	ZR	PR					
PLR52	L1	ZR	PR	PR	AlZnMG3CU	28000	14500	3550	4
	L2	ZR	PR	ZR					
	L3	PR	ZR	PR					
	R1	ZR	PR	PR					
	R2	ZR	PR	ZR					
	R3	PR	ZR	PR					

安裝組件

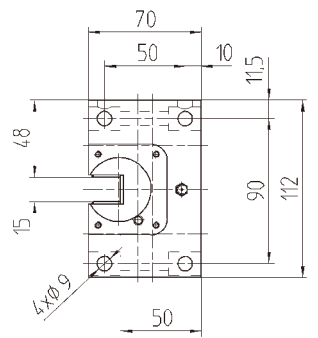
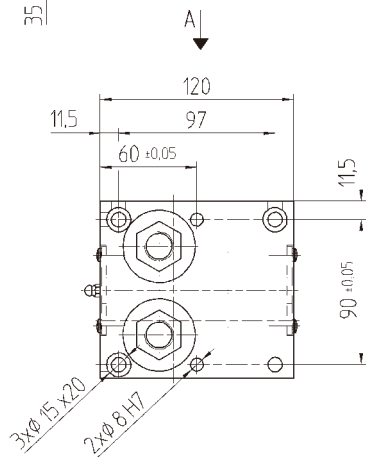
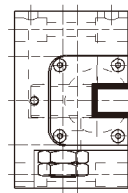
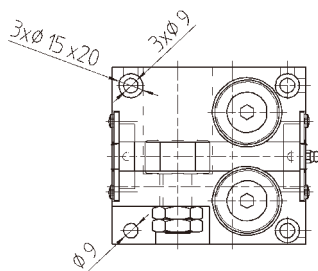
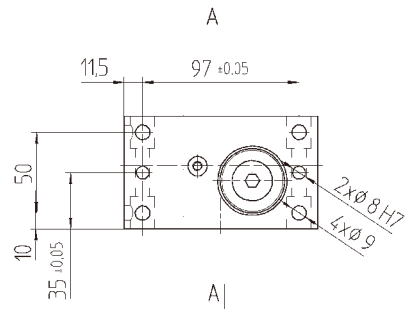
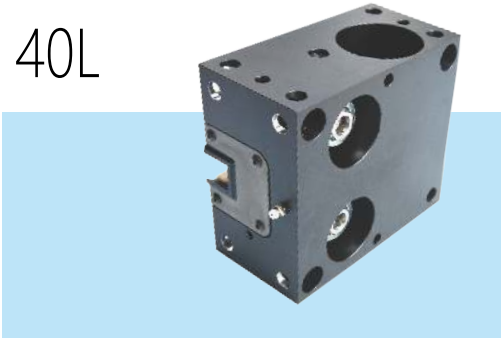


PLR40 材質 S45C 重量 0.01

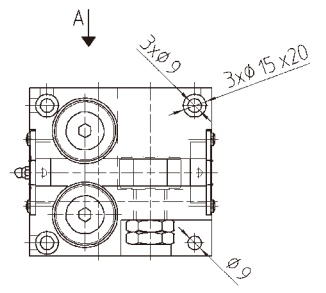
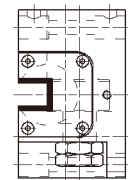
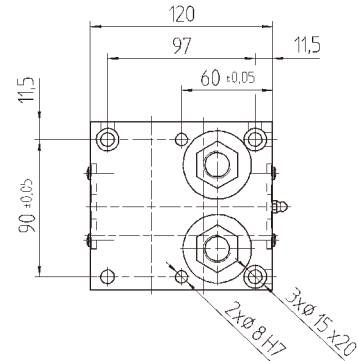
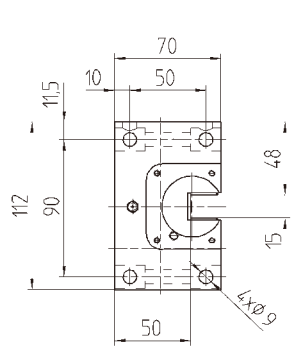
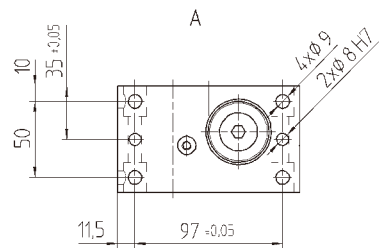
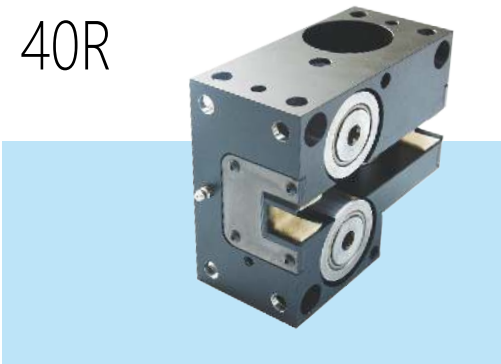


PLR52 材質 S45C 重量 0.01

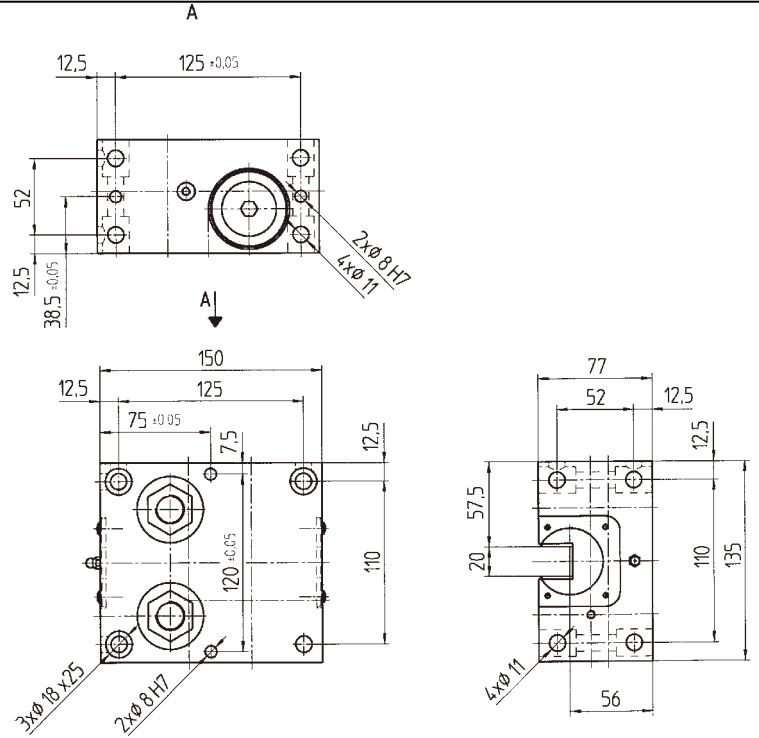
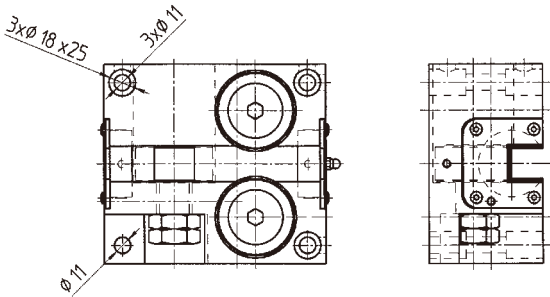
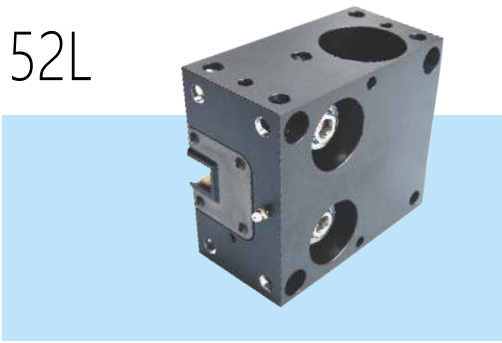
40L



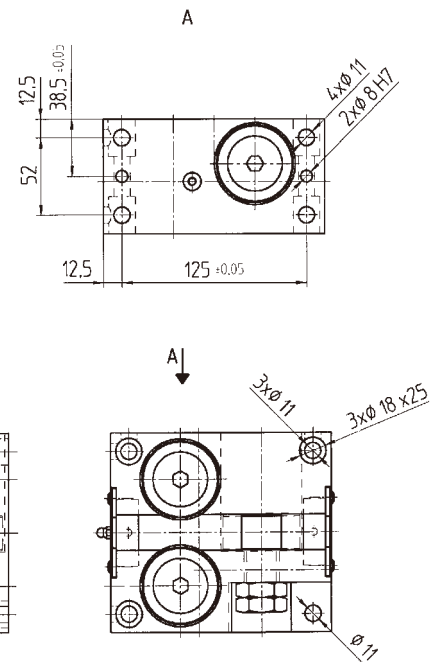
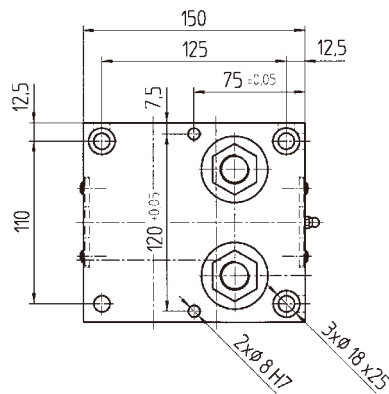
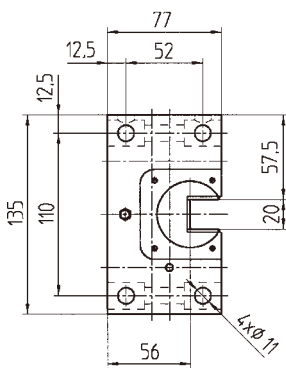
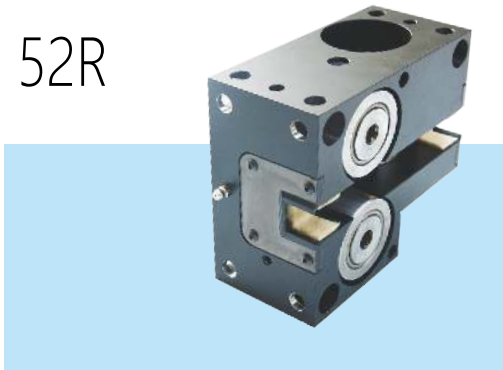
40R



52L

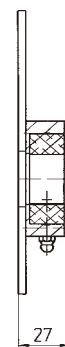
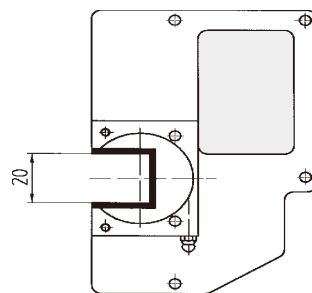
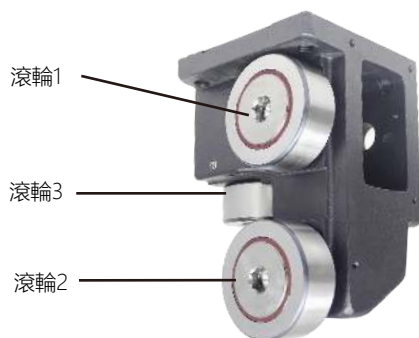


52R

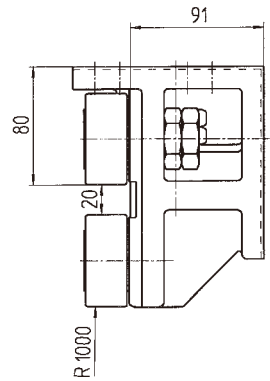
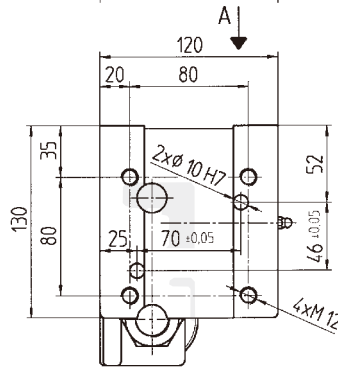
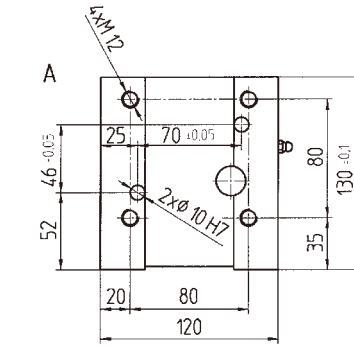
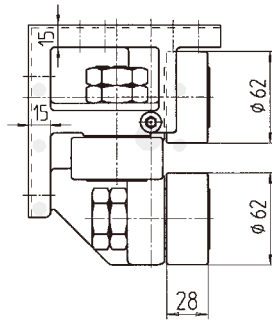
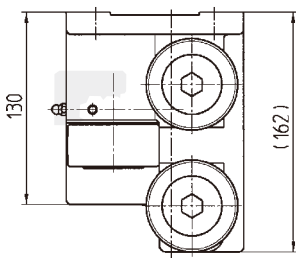
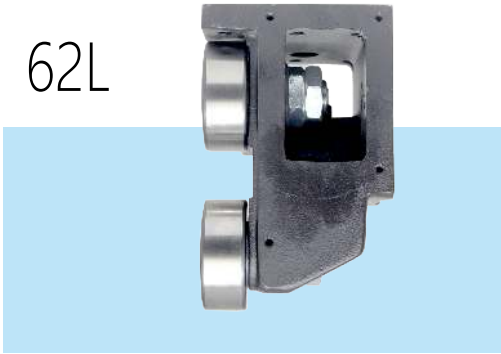


62 & 72 系列

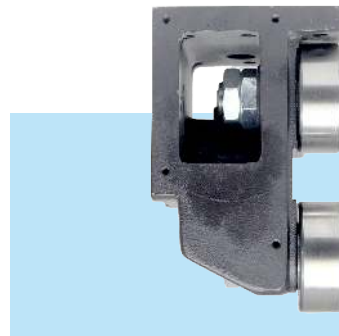
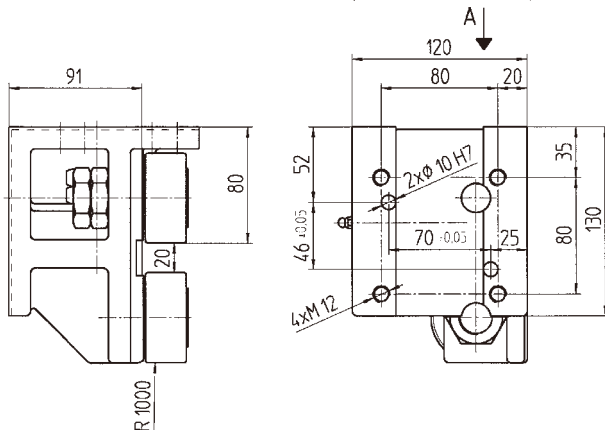
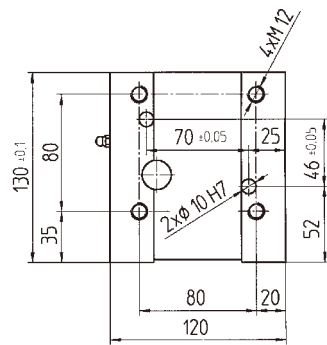
型號 Model		滾輪 Roller			材質 Materials	負荷能力 Load (N)			重量 weight (Kg)
		1	2	3		C0	C1	C2	
PLR62	L1	ZR	PR	PR	GGG40	40000	21500	5500	7
	L2	ZR	PR	ZR					
	L3	PR	ZR	PR					
	R1	ZR	PR	PR					
	R2	ZR	PR	ZR					
	R3	PR	ZR	PR					
PLR72	L1	ZR	PR	PR	GGG40	46300	24500	6100	9
	L2	ZR	PR	ZR					
	L3	PR	ZR	PR					
	R1	ZR	PR	PR					
	R2	ZR	PR	ZR					
	R3	PR	ZR	PR					



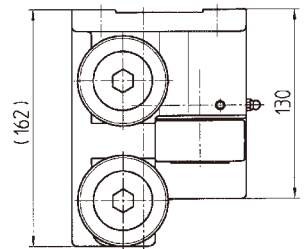
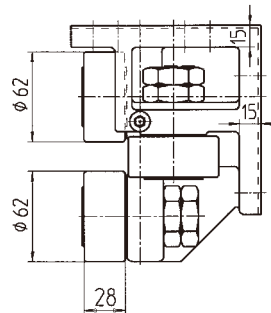
62L



A

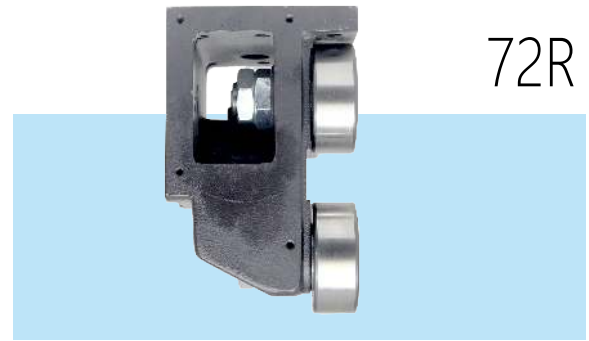
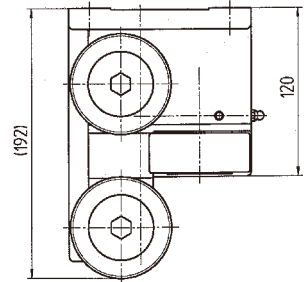
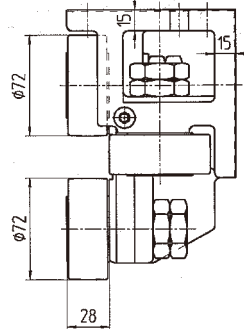
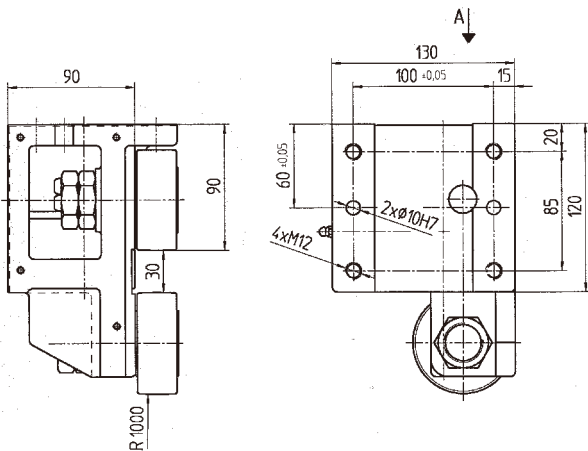
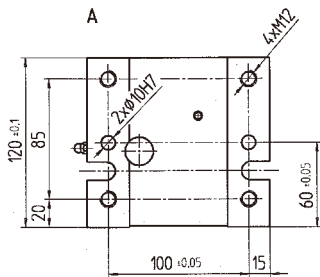
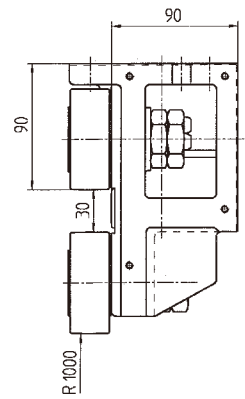
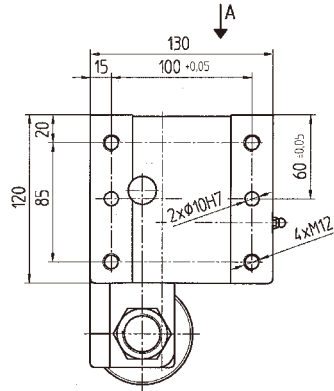
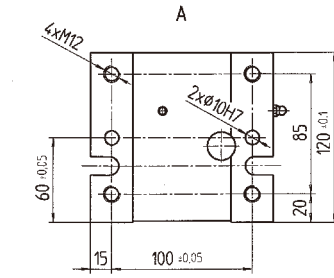
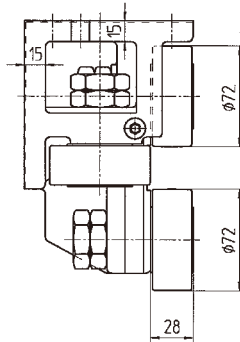
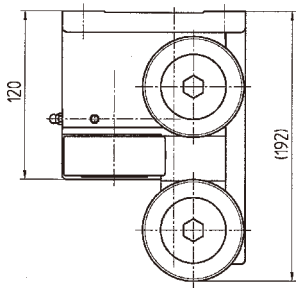
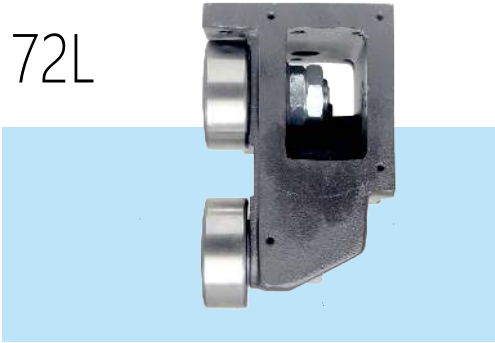


62R



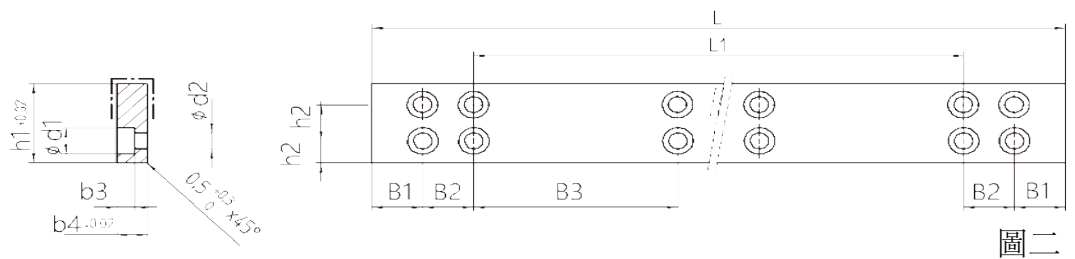
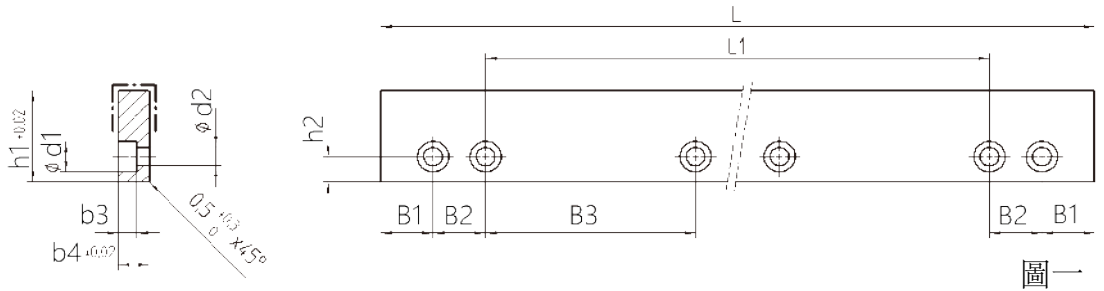
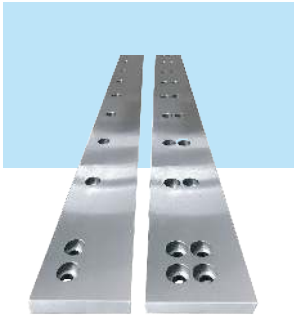
刮削板及潤滑單元請諮詢我們的銷售專員
If you need scraper and lubrication unit, please contact our sales.

72L



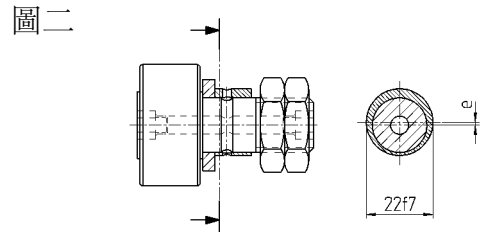
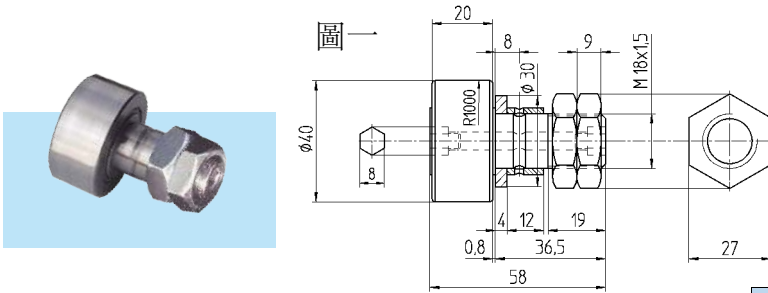
72R

刮削板及潤滑單元請諮詢我們的銷售專員
If you need scraper and lubrication unit, please contact our sales.

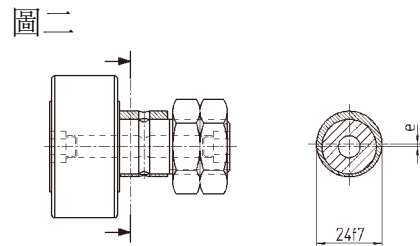
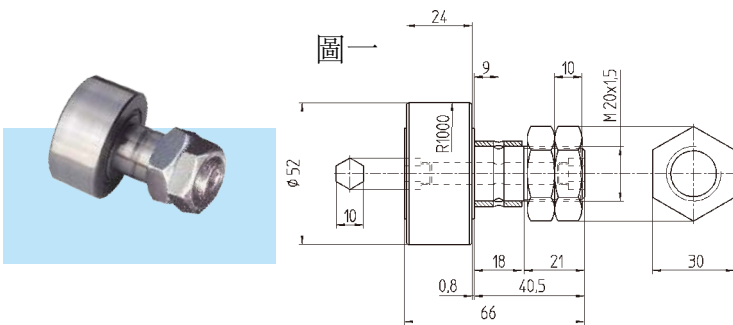


Unit = mm

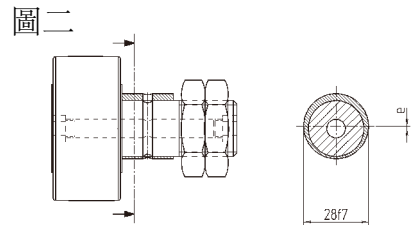
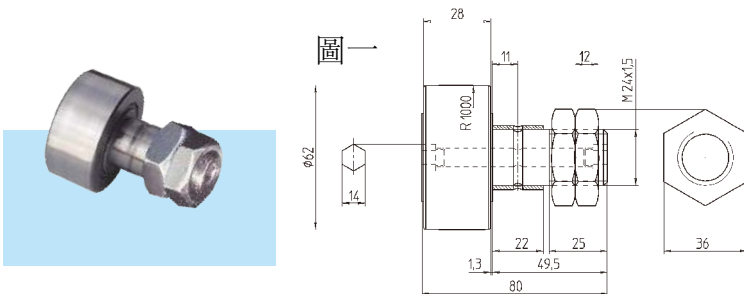
型號 Model	B1	B2	B3	d1	d2	h1	h2	L	L1	b3	b4	重量 Weight (Kg)	圖號 drawing
SP-4045	25	25	100	15	9	45	12.5	1000	900	9	15	4.8	圖一
SP-4080	25	25	100	15	9	80	25	2000	1200	9	15	18	
SP-4080	25	25	100	15	9	80	25	1200	1100	9	15	10.8	
SP-5670	25	25	100	15	11	70	25	2000	1200	11	20	21	
SP-5670	25	25	100	18	11	70	25	1200	1100	11	20	12.6	
SP-5680	25	25	100	18	11	80	25	2000	1200	11	20	22.9	
SP-5680	25	25	100	18	11	80	25	1200	1100	11	20	13.7	
SP-7080	20	100	100	20	13.5	80	25	2000	1200	13	20	34.7	
SP-7080	20	100	100	20	13.5	80	25	1200	1100	13	30	20.8	圖二
SP-70A2	30	100	100	20	13.5	120	25	2000	1200	13	30	56.1	
SP-70A2	30	100	100	20	13.5	120	25	1200	1100	13	30	33.7	



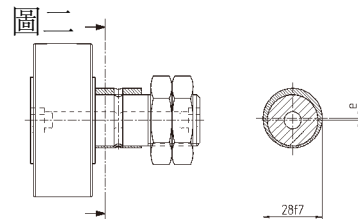
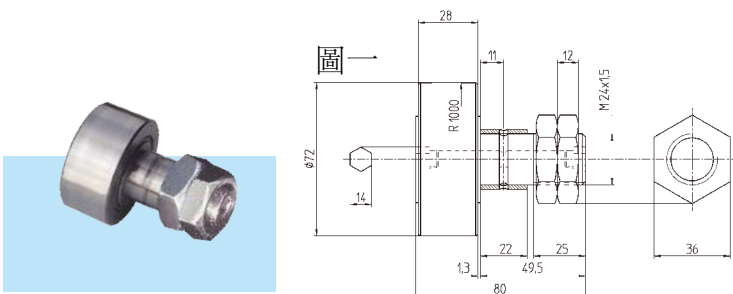
型號 Model	材質 Materials	圖號 drawing	重量 Weight (Kg)	鎖緊螺母 Lucknut (Nm)
ZR 40	100Cr6	圖一	0.258	87
PR 40		圖二	0.258	87



型號 Model	材質 Materials	圖號 drawing	重量 Weight (Kg)	鎖緊螺母 Lucknut (Nm)
ZR 52	100Cr6	圖一	0.47	120
PR 52		圖二	0.47	120

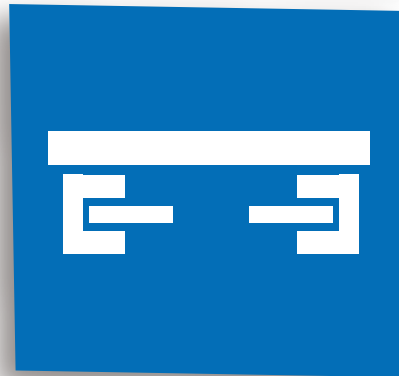
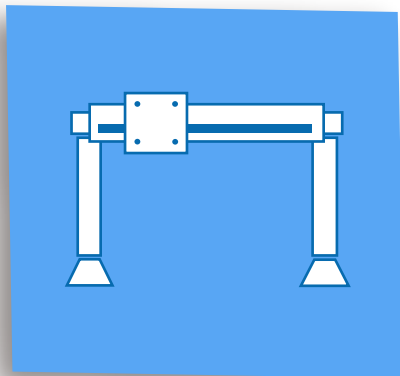
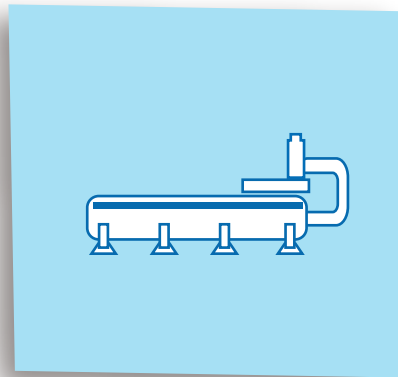
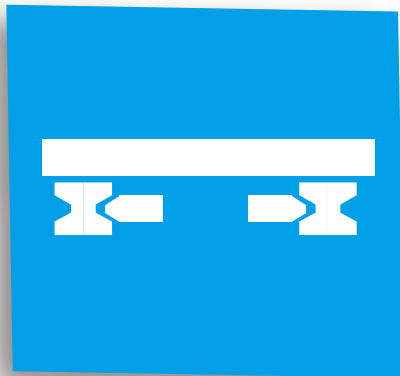


型號 Model	材質 Materials	圖號 drawing	重量 Weight (Kg)	鎖緊螺母 Lucknut (Nm)
ZR 62	100Cr6	圖一	0.82	220
PR 62		圖二	0.82	220



型號 Model	材質 Materials	圖號 drawing	重量 Weight (Kg)	鎖緊螺母 Lucknut (Nm)
ZR 72	100Cr6	圖一	1.05	220
PR 72		圖二	1.05	220

機器人多軸直線傳動 量身訂製工業自動化解決方案



0號