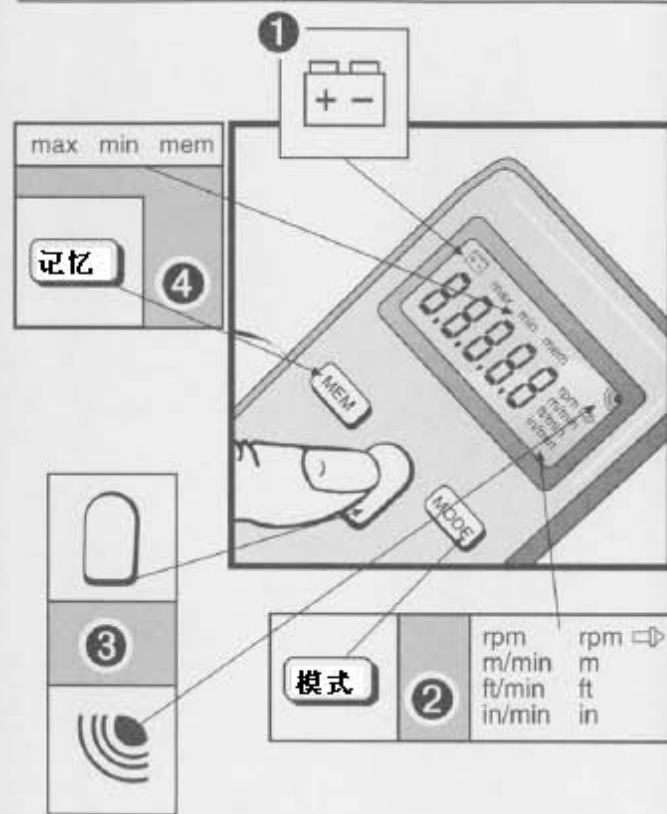


testo 470



操作手册



2 a

# RPM

量程

1.00-99999



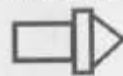
2.



max min hold rpm  
8.8.8.8.8

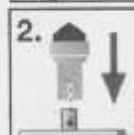
2 b

# RPM



量程

1.00-19999



3.



max min hold rpm  
8.8.8.8.8

2c

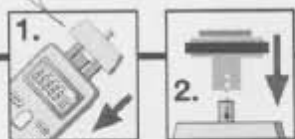
m/min  
ft/min  
in/min



m  
ft  
in



click



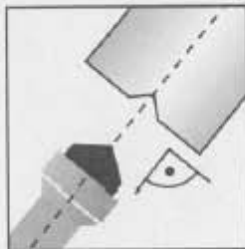
3

2a

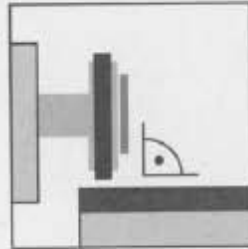
测量过程中  
按键



2b



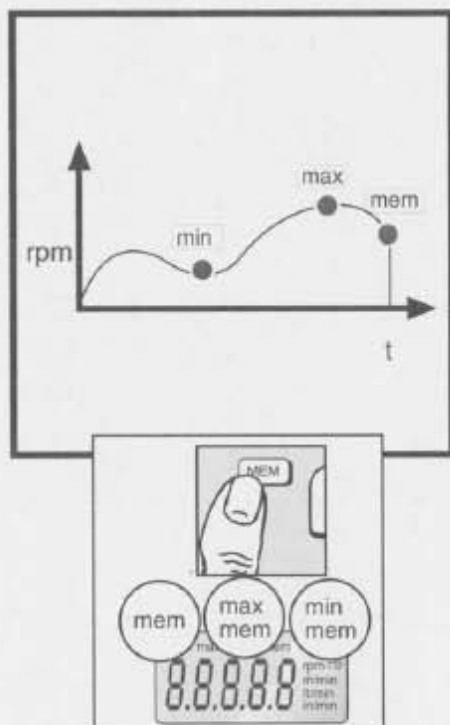
2c



4

## MEM

显示存储  
的测量值



## MEM

- \* 打开仪器
- \* 按MEM键
- \* 显示最近的测量值

## 技术数据:

### 精度

+/- 0,02%  
(1 digit/0,02m/1,00 in  
resolution)

### 测量

0,5 sec / 1 period

### 关机

30 sec  
dates will be stored

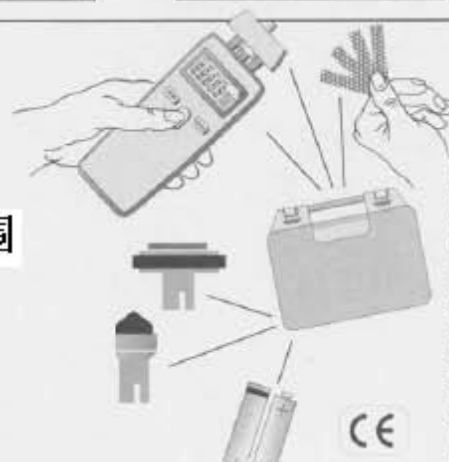
### 操作温度

0°...50°C  
(270°...323°K)  
(32°...122°F)

### 存储温度

-20°... 70°C  
(253°...343°K)  
(-4°...158°F)

### 交付范围



Art.Nr. A1-1318 / Recycling Papier  
Printed in Germany

